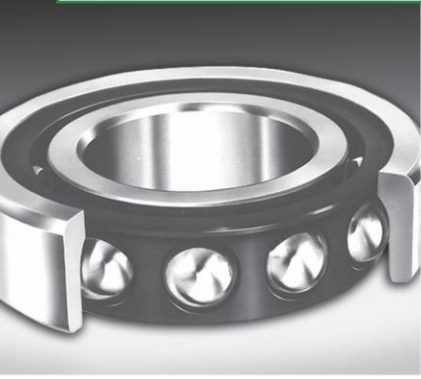


AMERICAN NATIONAL STANDARD

*Accredited Standards
Committee B3*



Ball And Roller Mounting Accessories Inch Design ANSI/ABMA 8.2:1999

Secretariat

**American Bearing
Manufacturers Association**

ANSI/ABMA 8.2:1999

**Reaffirmed 2008
Stabilized Maintenance 2010**

Table 5.1 Parts 1 & 2 Corrected November 2013



ABMA
2025 M Street, NW
Suite 800
Washington, DC 20036
Ph: 202-367-1155
Fax: 202-367-2155

E-mail: info@americanbearings.org
www.americanbearings.org

AMERICAN NATIONAL STANDARD
(This is not an approved part of the standard)

Approval of an American National Standard requires verification by ANSI that the requirements for due process, consensus, and other criteria for approval have been met by the standards developer.

Consensus means substantial agreement has been reached by directly and materially affected interests. This signifies the concurrence of more than a simple majority, but not necessarily unanimity. Consensus requires that all views and objections be considered, and that an effort be made toward their resolution.

The use of an American National Standard is completely voluntary; their existence does not in any respect preclude anyone, whether they approved the standard or not, from manufacturing, marketing, purchasing, or using products, processes, or procedures not conforming to the standard.

The American National Standards Institute does not develop standards and will in no circumstances give an interpretation of any American National Standard. Moreover, no person shall have the right or authority to issue an interpretation of an American National Standard in the name of the American National Standards Institute. Requests for interpretations should be addressed to the secretariat of the sponsor whose name appears on the title page of this standard.

CAUTION NOTICE: This American National Standard may be revised or withdrawn at any time.

Purchasers of American National Standards may receive current information on all standards by calling or writing the American National Standards Institute or online at www.ANSI.org.

Published by

American Bearing Manufacturers Association
2025 M Street, N.W., Suite 800
Washington, DC 20036
Copyright © 2011 by American Bearing Manufacturers Association

All rights reserved.

No part of this publication may be reproduced in any form, in an electronic retrieval system or otherwise, without prior written permission of the publisher.

Printed in the United States of America

FOREWORD

(This foreword is not a part of American National Standard ANSI/ABMA Std. 8.2-1999, Ball and Roller Bearing Mounting Accessories, Inch Design).

This Standard is a revision of the former ANSI/ABMA Standard 8.2-1991 and covers some of the inch design ball and roller bearing mounting accessories presently in production in the U.S.A.

This Standard establishes dimensions and minimum physical properties of mounting accessories used for locating or fixing inch design ball and roller bearings to the shaft of a machine or mechanism. All components covered by this Standard are designed to U.S. Customary (inch) dimensions. The equivalent S.I. (metric) dimensions are provided for the convenience of those using that system.

Suggestions for the improvement of this Standard gained through experience with its use will be welcomed. These should be sent to the American National Standards Institute, Inc., 11 West 42nd Street, New York, NY 10036.

The officers of Accredited Standards Committee B3 of the American National Standards Institute and the organizations represented at the time this Standard was submitted are as follows:

W. G. Looft, Chairman

G.T. Satterfield, Secretary

American Bearing Manufacturers Association
Hydraulic Institute
Society of Tribologists and Lubrication Engineers
U.S. Department of Defense, DISC
U.S. Department of the Navy

**ABMA Standards
for
Ball and Roller Bearings
and Balls**

ANSI/ABMA Standards

- 4 — Tolerance Definitions and Gauging Practices
- 7 — Shaft and Housing Fits for Metric Radial Ball and Roller Bearings (Except Tapered Roller Bearings)
Conforming to Basic Boundary Plans
- 8.1 — Ball and Roller Bearing Mounting Accessories, Metric Design
- 8.2 — Ball and Roller Bearing Mounting Accessories, Inch Design
- 9 — Load Ratings and Fatigue Life for Ball Bearings
- 10 — Metal Balls
- 11 — Load Ratings and Fatigue Life for Roller Bearings
- 12.1 — Instrument Ball Bearings, Metric Design
- 12.2 — Instrument Ball Bearings, Inch Design
- 13 — Roller Bearing Vibration and Noise
- 14 — Housing for Bearings With Spherical Outside Surfaces
- 15 — Ball Bearings With Spherical Outside Surfaces and Extended Inner Ring Width (Includes Eccentric Locking Collars)
- 16.1 — Airframe Ball, Roller and Needle Roller Bearing, Metric Design
- 16.2 — Airframe Ball, Roller and Needle Roller Bearing, Inch Design
- 18.1 — Needle Roller Bearings — Radial, Metric Design
- 18.2 — Needle Roller Bearings — Radial, Metric Design
- 19.1 — Tapered Roller Bearings, Radial, Inch Design
- 19.2 — Tapered Roller Bearings, Radial, Inch Design
- 20 — Radial Bearings of Ball, Cylindrical Roller and Spherical Roller Types, Metric Design
- 21.1 — Thrust Needle Roller and Cage Assemblies and Thrust Washers, Metric Design
- 21.2 — Thrust Needle Roller and Cage Assemblies and Thrust Washers, Inch Design
- 22.2 — Spherical Plain Bearings, Joint Type, Inch Design
- 23.2 — Thrust Bearings of Tapered Roller Type, Inch Design
- 24.1 — Thrust Bearings of Ball, Cylindrical Roller and Spherical Roller Types, Metric Design
- 24.2 — Thrust Bearings of Ball and Cylindrical Roller Types, Inch Design
- 25.2 — Rolling Bearings, Linear Motion, Recirculating Ball, Sleeve Type, Inch Series
- 26.2 — Thin Section Ball Bearings - Inch Design

ANSI/ABMA/ISO Standards

- 3096-1997 Rolling bearings - Needle rollers - Dimensions and tolerances
- 5593-1984 Rolling bearings - Vocabulary
- 10285-1994 Rolling bearings - Linear motion, recirculating ball, sleeve type - Metric series

An ABMA Standard is intended as a guide to aid the manufacturer, the consumer, and the general public. The existence of an ABMA Standard does not in any respect preclude anyone, whether he has approved the Standard or not, from manufacturing, marketing, purchasing, or using products, processes, or procedures not conforming to the standard. ABMA Standards are subject to revision or withdrawal at any time and users who refer to an ABMA Standard should satisfy themselves that they have the latest information from the Association.

**BALL AND ROLLER
MOUNTING ACCESSORIES
INCH DESIGN**

| Section | Page |
|--|-------------|
| 1. Scope | 1 |
| 2. Identification code | 1 |
| 3. General specifications..... | 6 |
| 4. Locknuts and removal nuts – Dimensions..... | 8 |
| 5. Lockwashers and lockplates – Dimensions | 14 |
| 6. Adapter sleeves and withdrawal sleeves – Dimensions..... | 20 |
| 7. Shafts – Dimensions | 32 |
| 8. Adapter assembly part numbers, and withdrawal sleeve and removal nut selection..... | 38 |
| 9. Tolerance limits | 41 |
| Appendix - Thread specifications | A1 |
| List of tables | iv |

LIST OF TABLES

| Table No. | Title | Page |
|-------------------|---|-------------|
| Dimensions | | |
| 4.1 | Locknut dimensions series N-00, AN-00, TN and TAN | |
| | Part 1 – Dimensions shown in mm | 8 |
| | Part 2 – Dimensions shown in inches | 9 |
| 4.2 | Locknut dimensions series N-000 | |
| | Part 1 – Dimensions shown in mm | 10 |
| | Part 2 – Dimensions shown in inches | 11 |
| 4.3 | Removal nut dimensions Series RN and ARN | |
| | Part 1 – Dimensions shown in mm | 12 |
| | Part 2 – Dimensions shown in inches | 13 |
| 5.1 | Lockwasher dimensions series W-00 and W-000 | |
| | Part 1 – Dimensions shown in mm | 14 |
| | Part 2 – Dimensions shown in inches | 15 |
| 5.2 | Lockwasher dimensions series TW-000 and WH-00 | |
| | Part 1 – Dimensions shown in mm | 16 |
| | Part 2 – Dimensions shown in inches | 17 |
| 5.3 | Lockplate dimensions series P-000 | |
| | Part 1 – Dimensions shown in mm | 18 |
| | Part 2 – Dimensions shown in inches | 19 |
| 6.1 | Adapter sleeve dimensions series S-00 and S-100 | |
| | Part 1 – Dimensions shown in mm | 20 |
| | Part 2 – Dimensions shown in inches | 21 |
| 6.2 | Adapter Sleeve dimensions series S-3000, S-3100 and S-3200 | |
| | Part 1 – Dimensions shown in mm | 22 |
| | Part 2 – Dimensions shown in inches | 23 |
| 6.3 | Withdrawal sleeve dimensions series SK-00, ASK-00 and SK-2200 | |
| | Part 1 – Dimensions shown in mm | 24 |
| | Part 2 – Dimensions shown in inches | 25 |
| 6.4 | Withdrawal sleeve dimensions series SK-100 and ASK-100 | |
| | Part 1 – Dimensions shown in mm | 26 |
| | Part 2 – Dimensions shown in inches | 27 |
| 6.5 | Withdrawal sleeve dimensions series SKX-00 and ASKX-00 | |
| | Part 1 – Dimensions shown in mm | 28 |
| | Part 2 – Dimensions shown in inches | 29 |
| 6.6 | Withdrawal sleeve dimensions series XX-100 and ASKX-100 | |
| | Part 1 – Dimensions shown in mm | 30 |
| | Part 2 – Dimensions shown in inches | 31 |
| 7.1 | Shaft dimensions for locknuts series N-00 and AN-00 | |
| | Part 1 – Dimensions shown in mm | 32 |
| | Part 2 – Dimensions shown in inches | 33 |
| 7.2 | Shaft dimensions for locknuts series N-00, TN and TAN (for tapered roller bearings) | |
| | Part 1 – Dimensions shown in mm | 34 |
| | Part 2 – Dimensions shown in inches | 35 |

| | |
|---|----|
| Part 1 - Dimensions shown in mm | 36 |
| Part 2 - Dimensions shown in inches | 37 |

Adapter assembly part numbers, and withdrawal sleeve and removal nut selection

| | |
|---|----|
| 8.1 Adapter assembly part numbers for series 30, 31, 02, and 22 | 38 |
| 8.2 Adapter assembly part numbers for series 32, 03, and 23 | 39 |
| 8.3 Withdrawal sleeve and removal nut selection | 40 |

Tolerance Limits

| | |
|--|----|
| 9.1 Locknuts and removal nuts - Dimension tolerances | |
| Part 1 – Dimensions shown in mm | 41 |
| Part 2 – Dimensions shown in inches | 41 |
| 9.2 Chamfer face runout and nut width variation | |
| Part 1 – Dimensions shown in mm | 42 |
| Part 2 – Dimensions shown in inches | 42 |
| 9.3 Adapter sleeve - Dimension tolerances | |
| Part 1 – Dimensions shown in mm | 43 |
| Part 2 - Dimensions shown in inches | 43 |
| 9.4 Adapter sleeve wall thickness variation tolerances | |
| Part 1 – Dimensions shown in mm | 43 |
| Part 2 - Dimensions shown in inches | 43 |
| 9.5 Withdrawal sleeves - All series | |
| Part 1 – Dimensions shown in mm | 44 |
| Part 2 - Dimensions shown in inches | 44 |

Appendix

| | |
|---|----|
| A-1 Tolerance limits – Lockwashers | A2 |
| A-2 Thread dimensions K, threads, Unified Form Special – Internal | A3 |
| A-3 Thread dimensions K, threads, Unified Form Special – External | A4 |
| A-4 Thread dimensions M, threads, Acme Class 3G, General Purpose | A5 |
| Figure A1 Thread form, K, threads | A6 |
| Figure A2 Thread form, M, threads | A7 |

This is a preview of "ANSI/ABMA 8.2-1999 (...". [Click here to purchase the full version from the ANSI store.](#)

BALL AND ROLLER BEARING MOUNTING ACCESSORIES INCH DESIGN

1. Scope

Mounting accessories covered in this standard are commonly used for the location or fixing of ball and roller bearings to the shaft of a machine or mechanism. The purpose of the standard is to establish dimensions and minimum physical properties of these components consistent and compatible with ABMA and ANSI Standards relating to ball and roller bearings. Products manufactured in accordance with this standard will fulfill the expected function when used with properly-designed shafts. This standard covers:

1.1 Locknuts and removal nuts - Locknuts and removal nuts for ball bearings, cylindrical, spherical, and tapered roller bearings.

1.2 Locking devices - Lockwashers and lockplates for ball bearings, cylindrical, spherical and tapered roller bearings.

1.3 Mounting sleeves - Adapter sleeves and withdrawal sleeves, for ball bearings and spherical roller bearings.

1.4 Shaft dimensions - Required dimensions for threads, keyways, and reliefs for shafts.

1.5 General information - Symbols, definitions, part numbers, materials, tolerances, and threads.

2. Identification code

2.1 Definitions

2.1.1 Locknuts and removal nuts

2.1.1.1 Bearing locknut - A fastener with internal threads utilized to secure and/or position the inner ring of a rolling element bearing to a shaft or mounting sleeve. (Some sizes may be used as removal nuts.)

2.1.1.2 Removal nut - A fastener with internal threads utilized to facilitate disassembly of a bearing from the withdrawal sleeve.

2.1.1.3 Face runout - A dimensional characteristic denoting total indicator reading at the locknut chamfer face while locknut is rotated one revolution on the axis of its threaded pitch diameter. Also denoted as squareness of the face with thread.

2.1.1.4 Locknut slot - Slots are provided on the outer diameter of locknuts and removal nuts. These slots aid in tightening with a spanner wrench or other types of turning tools and permit locking of the nut in final position, except on larger locknuts utilizing lockplates rather than lockwashers.

2.1.1.5 Chamfer face - The locknut face adjoining large O.D. chamfer, the face normally positioned against lockwasher or bearing.

2.1.1.6 Face parallelism - A term defining the parallel relationship between the chamfer face of the locknut and the opposite face of locknut.