

ANSI B11.20–2004

American National Standard for Machine Tools –

***Safety Requirements for
Integrated Manufacturing Systems***

ANSI-Accredited Standards Developer and Secretariat:

AMT – The Association For Manufacturing Technology
7901 Westpark Drive
McLean, VA 22102

Approved: July 1, 2004

by the American National Standards Institute, Inc.



AMERICAN NATIONAL STANDARDS

By approving this American National Standard, the ANSI Board of Standards Review confirms that the requirements for due process, consensus, balance and openness have been met by AMT – The Association For Manufacturing Technology (the ANSI-accredited standards developing organization).

American National Standards are developed through a consensus process. Consensus is established when substantial agreement has been reached by directly and materially affected interests. Substantial agreement means much more than a simple majority, but not necessarily unanimity. Consensus requires that all views and objections be considered, and that a concerted effort be made toward resolution. This process brings together volunteers and/or seeks out the views of persons who have an interest in the topic covered by this publication. While AMT administers the process and establishes procedures to promote fairness in the development of consensus, it does not write the document and it does not independently test, evaluate or verify the accuracy or completeness of any information or the soundness of any judgments contained in its standards or guidelines.

American National Standards are promulgated through ANSI for voluntary use; their existence does not in any respect preclude anyone, whether they have approved the standards or not, from manufacturing, marketing, purchasing, or using products, processes, or procedures not conforming to the standards. However, users, distributors, regulatory bodies, certification agencies and others concerned may apply American National Standards as mandatory requirements in commerce and industry.

The American National Standards Institute does not develop standards and will in no circumstances give an interpretation of an American National Standard. Moreover, no person shall have the right or authority to issue an interpretation of an American National Standard in the name of the American National Standards Institute. Requests for interpretations should be addressed to the Secretariat (AMT).

AMT MAKES NO WARRANTY, EITHER EXPRESSED OR IMPLIED AS TO THE FITNESS OF MERCHANTABILITY OR ACCURACY OF THE INFORMATION CONTAINED WITHIN THIS STANDARD, AND DISCLAIMS AND MAKES NO WARRANTY THAT THE INFORMATION IN THIS DOCUMENT WILL FULFILL ANY OF YOUR PARTICULAR PURPOSES OR NEEDS. AMT disclaims liability for any personal injury, property or other damages of any nature whatsoever, whether special, indirect, consequential or compensatory, directly or indirectly resulting from the publication, use of, application or reliance on this document. AMT does not undertake to guarantee the performance of any individual manufacturer or seller's products or services by virtue of this standard or guide, nor does it take any position with respect to the validity of any patent rights asserted in connection with the items which are mentioned in or are the subject of this document, and AMT disclaims liability for the infringement of any patent resulting from the use of or reliance on this document. Users of this document are expressly advised that determination of the validity of any such patent rights, and the risk of infringement of such rights, is entirely their own responsibility.

In publishing or making this document available, AMT is not undertaking to render professional or other services for or on behalf of any person or entity, nor is AMT undertaking to perform any duty owed by any person or entity to someone else. Anyone using this document should rely on his or her own independent judgment, or as appropriate, seek the advice of a competent professional in determining the exercise of reasonable care in any given circumstances.

AMT has no power, nor does it undertake to police or enforce conformance to the requirements of this document. AMT does not certify, test or inspect products, designs, or installations for safety or health purposes. Any certification or other statement of conformance to any health or safety-related information in this document shall not be attributable to AMT and is solely the responsibility of the certifier or maker of the statement.

NOTICE: This American National Standard may be revised or withdrawn at any time. The procedures of the American National Standards Institute require that action be taken periodically to reaffirm, revise, or withdraw this standard. You may contact the Secretariat for current status information on this, or other B11 standards. Individuals interested in obtaining up-to-date information on standards can access this information at <http://www.nssn.org> (or by contacting ANSI). NSSN - A National Resource for Global Standards, provides a central point to search for standards information from worldwide sources and can connect those who seek standards to those who supply them.

Published by: AMT – The Association For Manufacturing Technology
7901 Westpark Drive, McLean, VA 22102-4206, USA
Copyright © 2004 by AMT- The Association For Manufacturing Technology
All rights reserved. Printed in the United States of America

No part of this publication may be reproduced in any form, in an electronic retrieval system or otherwise, without the prior written permission of the publisher.

TABLE of CONTENTS	PAGE
FOREWORD	V
EXPLANATION OF THE FORMAT, AND ANSI B11 CONVENTIONS	VII
INTRODUCTION	VIII
1 SCOPE	1
1.1 GENERAL	1
1.2 EXCLUSIONS.....	1
2 NORMATIVE REFERENCES	2
3 DEFINITIONS	3
4 RESPONSIBILITY	7
4.1 SUPPLIER'S RESPONSIBILITY	7
4.2 USER'S RESPONSIBILITY	8
4.3 PERSONNEL RESPONSIBILITY	10
5 HAZARD CONTROL	11
5.1 TASK AND HAZARD IDENTIFICATION	11
5.2 RISK ASSESSMENT / RISK REDUCTION	12
6 DESIGN AND CONSTRUCTION	13
6.1 GENERAL	13
6.2 LAYOUT DESIGN REQUIREMENTS	13
6.3 ELECTRICAL EQUIPMENT REQUIREMENTS	13
6.4 MODES OF OPERATION	14
6.5 LOCAL CONTROL	15
6.6 ISOLATION OF POWER SOURCES.....	16
6.7 STORED ENERGY	16
6.8 EMERGENCY MOVEMENT.....	17
6.9 PERFORMANCE OF THE SAFETY-RELATED PARTS OF THE CONTROL SYSTEM.....	17
6.10 CONTROL SYSTEM RESET.....	17
6.11 SYSTEM STARTING/RESTARTING.....	17
6.12 EMERGENCY STOP.....	18
6.13 FLUID IMPACT ON OPERATING ENVIRONMENT AND EQUIPMENT	18
6.14 MECHANICAL EQUIPMENT REQUIREMENTS.....	19
6.15 SAFEGUARDING DESIGN REQUIREMENTS	20
6.16 EJECTED PARTS OR FLUIDS.....	20
6.17 VIEWING WINDOWS.....	20
6.18 STRUCTURAL INTEGRITY	20
6.19 NOISE	20
6.20 ERGONOMIC CONSIDERATIONS	21
6.21 ERRORS OF FITTING.....	21
6.22 LIFTING OF SYSTEM COMPONENTS	21
6.23 DOCUMENTATION REQUIREMENTS.....	21
7 LAYOUT, INSTALLATION, AND VALIDATION	22
7.1 GENERAL	22
7.2 LAYOUT AND INSTALLATION.....	22
7.3 VALIDATION	23

8	SAFEGUARDING	24
8.1	GENERAL	24
8.2	SAFEGUARDING REQUIREMENTS	24
8.3	GUARDS.....	25
8.4	SAFEGUARDING DEVICES	26
8.5	AWARENESS BARRIERS AND DEVICES	26
8.6	SAFEGUARDING AGAINST SPECIFIC HAZARDS	26
8.7	SAFE WORK PROCEDURES	27
8.8	PERFORMANCE OF THE SAFETY-RELATED FUNCTION(S)	27
8.9	SAFETY RELATED SPAN OF CONTROL	28
8.10	MUTING.....	28
8.11	SAFETY RELATED SYSTEM RESET	28
9	SET-UP, OPERATION AND MAINTENANCE	30
9.1	GENERAL	30
9.2	SET-UP.....	30
9.3	OPERATION	30
9.4	MAINTENANCE	30
9.5	PERSONAL PROTECTIVE EQUIPMENT	30
9.6	TRAINING	31
	ANNEX A - ILLUSTRATIVE EXAMPLES OF INTEGRATED MANUFACTURING SYSTEMS	32
	ANNEX B - EXAMPLES OF HAZARDS, TASKS, AND TASK/HAZARD PAIR LISTS GENERATED BY AN INTEGRATED MANUFACTURING SYSTEM RISK ASSESSMENT	35
	ANNEX C - PERFORMANCE OF THE SAFETY-RELATED FUNCTION(S)	39
	ANNEX D - SAFETY RELATED SPAN OF CONTROL EXAMPLES WITHIN AN IMS	40
	ANNEX E - ZONE DETERMINATION	43

FOREWORD (This Foreword is not part of the requirements of American National Standard B11.20-2004)

The primary objective of this standard is to eliminate or control hazards to personnel associated with integrated manufacturing systems by establishing requirements for the construction, operation and maintenance of these machines. To accomplish this objective, responsibilities have been assigned to the supplier (e.g., manufacturer, rebuilder, reconstructor, installer, integrator), the user, and personnel in the working environment.

The words "safe" and "safety" are not absolutes. Safety begins with good design. While the goal of this standard is to eliminate injuries, it is recognized that risk factors cannot be practically reduced to zero in any human activity. This standard is not intended to replace good judgment and personal responsibility. Operator skill, attitude, training, job monotony, fatigue and experience are safety factors that must be considered by the user.

This standard reflects the most commonly used and time-tested state of the art at the time of its approval. The inclusion or omission of language relative to any evolving technology, either in the requirements or explanatory area of this standard, in no way infers acceptance or rejection of such technologies.

Inquiries with respect to the application or the substantive requirements of this standard and suggestions for its improvement are welcomed, and should be sent to the AMT – The Association For Manufacturing Technology, 7901 Westpark Drive, McLean, Virginia 22102-4206, Attention: B11 Secretariat.

Effective Date

The following is informative guidance only, and not a normative part of this standard. This Subcommittee recognizes that some period of time after the approval date on the title page of this document is necessary for suppliers and users to develop new designs, or modify existing designs or manufacturing processes in order to incorporate the new or revised requirements of this standard into their product development or production system.

This Subcommittee recommends that suppliers complete and implement design changes for new machines within 30 months of the approval of this standard.

For existing or modified machines, this subcommittee recommends that users should confirm that the equipment / process has tolerable risk using generally recognized risk assessment methods within 30 months of the approval of this standard. If the risk assessment shows that modification(s) is necessary, refer to the requirements of this standard to implement protective measures for appropriate risk reduction.

This standard was processed and submitted for ANSI approval by the B11 Accredited Standards Committee on Safety Standards for Machine Tools. Committee approval of this standard does not necessarily imply that all committee members voted for its approval. At the time this document was approved as an American National Standard, the ANSI B11 Accredited Standards Committee was composed of the following member organizations:

John W. Russell, PE, CSP Chairman
Gary D. Kopps, Vice-Chairman
David A. Felinski, Secretary

Organizations Represented

Aerospace Industries Association of America
Alliance of American Insurers
American Institute for Steel Construction
American Society of Safety Engineers
AMT- The Association For Manufacturing Technology
Automotive Industry Action Group
Boeing
Can Manufacturers Institute
General Motors Corporation
John Deere
Metal Building Manufacturers Association
Metal Powder Industries Federation

Name of Representative

Delegate

Alternate

Willard J. Wood	Robert J. Eaker, PE, CSP
John Russell, PE, CSP	Keith Lessner
Thomas Schlafly	
Bruce Main, PE, CSP	George Karosas, PE, CSP
Russell Bensman	
Ron Tillinger	
Robert J. Eaker, PE, CSP	Willard J. Wood
Geoffrey Cullen	
Michael Taubitz	
Gary Kopps	Ellen K. Blanshan
Charles M. Stockinger	Charles E. Praeger
Dennis Cloutier, CSP	Teresa F. Stillman

Natl. Inst. for Occupational Safety & Health	John Etherton, PhD	
Occupational Safety & Health Administration	Ken Stevanus	
Packaging Machinery Manufacturers Institute	Charles F. Hayes	
Precision Metalforming Association	William Gaskin	Christie Carmigiano
Presence Sensing Device Manufact. Assn.	Jim Kirton	Mike Carlson
Robotic Industries Association	Jeff Fryman	
Scientific Technologies, Inc.	Frank Webster	Chris Soranno
Sheet Metal & Air Conditioning Contractors' Natl. Assn.	Mike McCullion, CSP	
Tooling and Manufacturing Association	Daniel Kiraly	Allan Te Ronde
Toyota Motor Manufacturing North America	Barry Boggs	Tom Huff

At the time this standard was approved, the ANSI B11 ASC **B11.20 Subcommittee** had the following members who participated in the development of this revision:

Steve Dukich	Rockwell Automation	Chairman
Mike Crampton	General Motors	Secretary
Don Lawson	Pilz	Chairman (3/01 – 2/02)
Blake Consdorf	Wes-Tech	Chairman (3/02 – 9/02)
John Bloodgood, PE	JFB Enterprises	
Barry Boggs	Toyota Motor Manufacturing, NA	
Sam Boytor	Fox Controls	
Lee Burk	Pilz	
Mike Carlson	Banner Engineering	
Howard DeWees	SICK, Inc.	
Brian Eggleston	Toyota Motor Manufacturing, NA	
Heinz Knackstedt	C & E Sales	
Gary Kopps	Deere & Company	
Ralph Lamkin	Lovejoy	
Tom Levitt	Levitt & Associates	
Marshall Lovelace	Stuart C. Irby Company	
Bruce Main, PE, CSP	design safety engineering	
Sam Mazzara	Ford Motor Company	
Larry Morel	Delphi	
Greg Motorojescu	Cross Huller	
Lou Schubert	Scientific Technologies Inc.	
Roberta Nelson Shea	Honeywell	
Chris Soranno	STI Machine Services, Inc.	
Steve Stevens	Cross Huller	
Mike Taubitz	General Motors Corporation	
Eric Thomas	Toyota Motor Manufacturing, NA	
Greg Todd	DaimlerChrysler Corporation	
Tony Bratkovich, PE	AMT	

Explanation of the format, and ANSI B11 conventions

This ANSI B11.20 – 2004 standard is divided into parts formerly referred to as sections or chapters and now referred to as clauses in line with the current ANSI style manual. Major divisions of clauses are referred to as subclauses and, when referenced by other text in the standard, are denoted by the subclause number (e.g., see 5.1).

The standard uses a two-column format to provide supporting information for requirements. The material in the left column is confined to “Standard Requirements” only, and is so captioned. The right column, captioned “Explanatory Information” contains information that the writing Subcommittee believed would help to clarify the requirements contained in the standard. This column should not be construed as being a part of the requirements of this American National Standard.

As in all American National Standards, the term “SHALL” denotes a requirement that is to be strictly followed in order to conform to this standard; no deviation is permitted. The term “SHOULD” denotes a recommendation, a practice or condition among several alternatives, or a preferred method or course of action.

Similarly, the term “CAN” denotes a possibility, ability or capability, whether physical or causal, and the term “MAY” denotes a permissible course of action within the limits of the standard.

B11 conventions: Operating rules (safe practices) are not included in either column of this standard unless they are of such nature as to be vital safety requirements, equal in weight to other requirements, or guides to assist in compliance with the standard. The B11 standards do not use the term “and/or” but instead, the term “OR” is used as an inclusive disjunction, meaning *one or the other or both*. A distinction between the terms “*individual*” and “*personne*” is drawn. Individual includes personnel (employees, subcontractors, consultants, or other contract workers under the indirect control of the supplier or user) but also encompasses persons who are not under the direct or indirect control of the supplier or user (e.g., visitors, vendors, etc.). Gauge refers to a measuring or testing instrument; gage refers to limiting device (e.g., backgage).

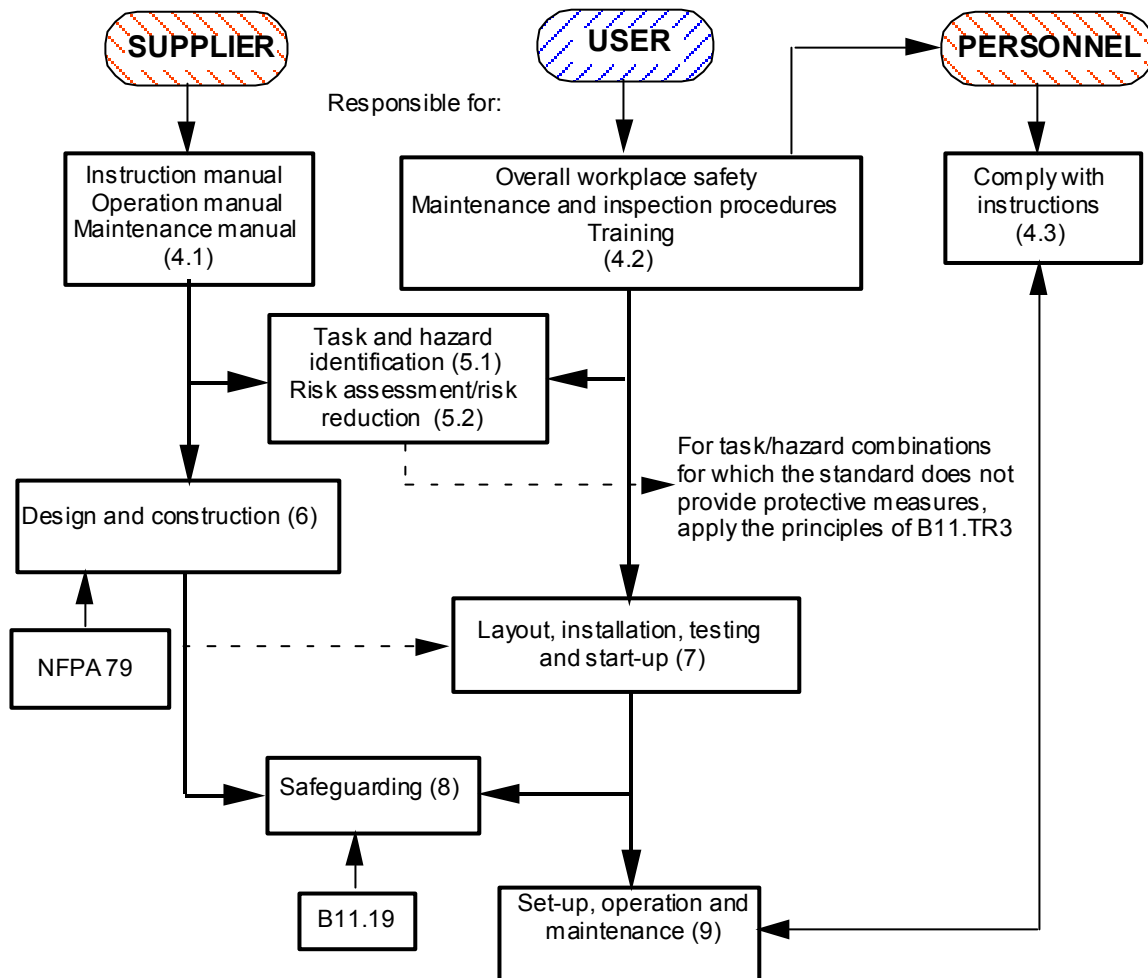
Suggestions for improvement of this standard will be welcome. They should be sent to AMT-The Association For Manufacturing Technology, 7901 Westpark Drive, McLean, VA 22102 - Attention: B11 Secretariat.

Introduction

The primary purpose of every machine tool is to process parts. During production, maintenance, commissioning and de-commissioning, hazards exist that may result in injury.

The primary purpose of the ANSI B11 series of machine tool safety standards is to devise and propose ways to minimize risks of the potential hazards. This can be accomplished either by an appropriate machine design, by restricting personnel or other individuals' access to hazard areas, and by devising work procedures to minimize personnel exposure to hazardous situations.

The responsibility for the alleviation of these risks is divided between the equipment supplier, the equipment user and its operating personnel, as follows (numbers in parentheses refer to the clause numbers in these standards which address that responsibility):



*American National Standard for Machine Tools –
Safety Requirements for Integrated Manufacturing
Systems*

STANDARDS REQUIREMENTS

1 Scope

1.1 General

This American National Standard specifies the safety requirements for the design, construction, set-up, operation and maintenance (including installation, dismantling and transport) of integrated manufacturing systems.

An integrated manufacturing system:

- a) incorporates two or more industrial machines, at least one of which is a machine tool;
- b) is linked by a material handling system;
- c) is interconnected with and coordinated by a control system;
- d) is capable of being re-programmed, re-configured or re-sequenced for the manufacturing of a variety of discrete parts or assemblies.

An integrated manufacturing system shall be designed and safeguarded to ensure proper and safe operation and maintenance in accordance with the risk assessment (see Clause 5).

1.2 Exclusions

This standard does not cover:

- a) safety aspects of individual machines and equipment that may be covered by standards specific to those machines and equipment (B11 "base" standard);

NOTE: See inside cover of this standard for a list of the B11 "base" standards.

- b) transfer machines or transfer lines;
- c) continuous flow processes.

EXPLANATORY INFORMATION

(Not part of the requirements of this American National Standard for Machine Tools – *Safety requirements for Integrated Manufacturing Systems.*)

E1.1

The terms "integrated manufacturing system," and "integrated manufacturing cell" should be considered as synonymous. This may also be known as a "flexible manufacturing system."

Integrated manufacturing systems may be comprised of two or more zones, each with their own individual controls.

Zones segment the integrated manufacturing system into manageable sections with defined purposes. See also, Annex D.

See Annex A for examples of integrated manufacturing systems.

E1.2

- a) Where machines and equipment of an integrated manufacturing system are operated separately or individually, the relevant B11 safety standards for these specific machines and related equipment should apply.

- b) See ANSI B11.24.

- c) Examples of continuous flow processes include but are not limited to:
 - petrochemical;
 - food/beverage processing;
 - textiles;
 - rubber;
 - pulp and paper;
 - metal refining;
 - printing.