

ANSI/ITSDF B56.1-2012

(Revision of ANSI/ITSDF B56.1-2009)



SAFETY STANDARD FOR LOW LIFT AND HIGH LIFT TRUCKS

Powered and Nonpowered Industrial Trucks

AN AMERICAN NATIONAL STANDARD

INDUSTRIAL TRUCK STANDARDS DEVELOPMENT FOUNDATION

Each B56 Standard is available free of charge from ITSDF. Each standard is copyrighted by ITSDF and may not be published, reproduced, distributed or otherwise made publicly available without the prior written consent of ITSDF. Please visit www.ITSDF.org to ensure that you have the most recent version.

Date of Issuance: February 23, 2012

ITSDF issues written replies to inquiries concerning interpretations of technical aspects of this Standard. Interpretations are published on the ITSDF Web site at <http://www.itsdf.org> as they are issued, and will also be published within the next edition of the Standard.

ITSDF is the registered trademark of Industrial Truck Standards Development Foundation.

This code or standard was developed under procedures accredited as meeting the criteria for American National Standards. The Standards Committee that approved the code or standard was balanced to assure that individuals from competent and concerned interests have had an opportunity to participate. The proposed code or standard was made available for public review and comment that provides an opportunity for additional public input from industry, academia, regulatory agencies, and the public-at-large.

ITSDF does not "approve," "rate," or "endorse" any item, construction, proprietary device, or activity.

ITSDF does not take any position with respect to the validity of any patent rights asserted in connection with any items mentioned in this document, and does not undertake to insure anyone utilizing a standard against liability for infringement of any applicable letters patent, nor assume any such liability. Users of a code or standard are expressly advised that determination of the validity of any such patent rights, and the risk of infringement of such rights, is entirely their own responsibility.

Participation by federal agency representative(s) or person(s) affiliated with industry is not to be interpreted as government or industry endorsement of this code or standard.

ITSDF accepts responsibility for only those interpretations of this document issued in accordance with the established ITSDF procedures and policies, which precludes the issuance of interpretations by individuals.

Industrial Truck Standards Development Foundation
1750 K Street NW, Suite 460, Washington DC 20006
<http://www.itsdf.org>

Copyright © 2012 by
INDUSTRIAL TRUCK STANDARDS DEVELOPMENT FOUNDATION
All rights reserved
Printed in the U.S.A.

CONTENTS

Foreword	iv
Committee Roster.....	v
Summary of Changes	vi
B56 Series Introduction.....	ix
Part I Introduction.....	1
1 Scope.....	1
2 Purpose.....	1
3 Interpretation.....	1
Part II For the User.....	2
4 General Safety Practices	2
5 Operating Safety Rules and Practices	8
6 Maintenance and Rebuild Practices	13
Part III For the Manufacturer.....	17
7 Design and Construction Standards	17
Part IV Glossary of Commonly Used Words and Phrases.....	53
Part V References.....	62
Figures	
1 Operator-Up Counterbalanced Front/Side Loader Lift Truck	39
2 Service Brake Performance Requirements	40
3 Typical Fork.....	46
4 Overhead Guard Cube Drop Test Deformation Limit	47
5 Overhead Guard Impact Test Method.....	47
6 Overhead Guard Impact Deformation Limit (Sit-Down)	48
7 Overhead Guard Impact Deformation Limit (Stand-Up).....	48
8 Steps, Ladders.....	49
9 Fork Extension.....	51
10 Motorized Hand/Rider Truck.....	54
11 Counterbalanced Front/Side Loader Lift Truck.....	56
12 Types of Trucks: High Lift Counterbalanced Truck, Cantilever Truck, Rider Truck, Forklift Truck.....	57
13 High Lift Rider Platform Truck	58
14 Low Lift Truck, Low Lift Platform Truck	58
15 High Lift Order Picker Rider Truck.....	58
16 Low Lift Order Picker Truck	58
17 Motorized Hand Truck, Pallet Truck.....	59
18 High Lift Motorized Hand Trucks	60
19 Narrow Aisle Rider Truck, Straddle Truck.....	61
20 Operator-Up Counterbalanced Front/Side Loader Truck	61
21 Reach Rider Truck.....	61
22 Single Side Loader Rider Truck	61

Tables

1(a)	Personal Fall Protection System Configurations (pounds)	6
1(b)	Personal Fall Protection System Configurations (kilograms).....	6
2(a)	Counterbalanced Lift Trucks	21
2(b)	Counterbalanced Truck Handling Freight Containers	22
3	Narrow Aisle High Lift Trucks.....	26
4	Narrow Aisle High Lift Trucks.....	28
5	Narrow Aisle High Lift Trucks.....	29
6	High Lift Order Picker Trucks.....	31
7	High Lift Order Picker Trucks.....	32
8	Counterbalanced Front/Side Loader Lift Trucks	33
9	Counterbalanced Front/Side Loader Lift Trucks	34
10	Counterbalanced Front/Side Loader Lift Trucks	35
11	Operator-Up Counterbalanced Front/Side Loader Lift Trucks.....	36
12	Operator-Up Counterbalanced Front/Side Loader Lift Trucks.....	37
13	Operator-Up Counterbalanced Front/Side Loader Lift Trucks.....	38
14	Single Side Loader Lift Trucks.....	41
15	Lever- or Handle-Type Controls: Sequence of Location and Direction of Motion ...	45
16	Overhead Guard Impact Test Loads	46
17	Dimensions of Steps, Ladders.....	49

FOREWORD

(This foreword is not part of ANSI/ITSDF B56.1-2012)

In June 1946, The American Society of Mechanical Engineers adopted a resolution to develop a Safety Code for Powered Industrial Trucks. On August 7, 1947, the American Standards Association (now called the American National Standards Institute, Inc.) approved ASME sponsorship of such a standard. An organizational meeting was held on May 20, 1948.

Comments from a first draft, dated 1949, were incorporated in a final draft dated November, 1949, which was submitted to Sectional Committee Members for letter ballot vote and was unanimously affirmed. In June, 1950, ASA (now called ANSI) approved the code as submitted, and issued it as ASA B56.1-1950, Safety Code for Industrial Powered Trucks.

In accordance with procedures to review the Standard every 5 years, revisions were developed under ASA and its successor organizations as follows:

Revision	Started	Printed	Standard Body
B56.1-1955	May 1948	March 1955	American Standards Association
B56.1-1959	March 1955	August 1959	American Standards Association
B56.1-1969	August 1959	September 1969	USA Standards Institute
B56.1-1975	October 1965	September 1975	American National Standards Institute
B56.1-1983	October 1975	April 1984	American National Standards Institute
B56.1-1988	April 1987	June 1988	American National Standards Institute

Revision	Approved	Issued	Standard Body
B56.1-1993	12 November 1993	January 1994	American National Standards Institute
B56.1-2000	19 January 2000	May 2000	American National Standards Institute
B56.1-2004	20 April 2004	22 November 2004	American National Standards Institute
B56.1-2005	16 September 2005	22 November 2004	American National Standards Institute
B56.1-2009	26 August 2009	7 October 2009	American National Standards Institute
B56.1-2012	17 February 2012	23 February 2012	American National Standards Institute

ITSDF issues written replies to inquiries concerning interpretations of technical aspects of this Standard. Interpretations are not part of the addenda to the Standard.

The 2012 edition of B56.1 was approved by the American National Standards Institute on February 17, 2012.

This Standard shall become effective 1 year after its respective Date of Issuance. Part III applies only to trucks manufactured after the effective date.

ITSDF STANDARDS COMMITTEE ROSTER B56 Powered and Nonpowered Industrial Trucks

(The following is the roster of the Committee at the time of approval of this Standard.)

OFFICERS

S.J. Simpson, *Chair*
J. E. Johnson, *Vice Chair*
C.F. Merther, *Secretary*

COMMITTEE PERSONNEL

Jimmy Eavenson, MTD Products, Inc.
Rudy Fiers, U.S. Department of Labor - OSHA
Dennis Graham, Ford Motor Company
Ron Graunstadt, U.A.W.
Mats Herrstromer, Dematic
John Johnson, Johnson Engineering Services, Inc.
Donald Labelle, Betsie Bay Consulting
James Lyle, NACCO Material Handling Group, Inc.

David Norton, The Raymond Corporation
Eric Ramsey, Sellick
Rolland Riley, U.S. Army TACOM
Robert Rogers, Rogers Consulting
Kenneth Sanders, East Penn Mfg. Co., Inc.
Stan Simpson, Simpson Group. LLC
Ken Van Hook, Safe-T-Consultants
Richard Ward, Material Handling Ind. America

SUBCOMMITTEE B56.1 – LOW LIFT AND HIGH LIFT TRUCKS

Dennis Graham, *Chair*, Ford Motor Company
Steve McDermitt, *Vice Chair*, Crown Equipment
Charlie Barnes, C. A. Barnes Consulting
Bruce Bennett, Consultant
Mike Boyles, Taylor Machine Works
Frank Entwisle, Consultant
Rudy Fiers, OSHA
Ron Graunstadt, U.A.W
John Jacovety, BASF
Thomas M. Jeruzal, Daimler Chrysler Corp.
John Johnson, Johnson Engineering Services, Inc.

Darrel Libby, NACCO Material Handling Group
George Maes, Linde
Loren Mills, Safety and Forensic Enterprises, LLC
Joe Monaco, National LIFTOR Licensing Systems
Dave Mueller, BPR/Rico
Dale Muhlenkamp, Daleco
David Norton, Raymond Corporation
Rolland Riley, US Army
R. Kevin Smith, R K Smith Engineering Inc.
Ken Van Hook, MCFA

ANSI/ITSDF B56.1-2012

SUMMARY OF CHANGES

Following approval by the ITSDF B56 Committee and after public review, ANSI/ITSDF B56.1-2012 was approved as a revision of ANSI/ITSDF B56.1-2009 on February 17, 2012. Significant changes in this revision the addition of “attachments” in the user section as well as changes to steering knobs, combined weight, and fall protection requirements.

ERRATA ISSUED 10 AUGUST 2012:

An editorial error was made in ITSDF B56.1-2012. The correction has been made in this version. The corrected version of the standard was posted 15 August 2012 on www.itsdf.org.

<i>Page</i>	<i>Location</i>	<i>Change</i>
51	7.37.1 (e-g)	The following three paragraphs were inadvertently omitted : “(e) when controls are supplied for use on the elevating platform, they shall be readily accessible to the operator and protected from damage and inadvertent actuation. Provision to shut off power to the truck shall be provided. An emergency lowering means operable from the ground shall be provided for overriding the controls on the platform. (f) hydraulic or pneumatic hoisting systems shall include means to prevent unintended descent in excess of 0.6 m/s in event of a hose failure. (g) a structural safety factor of not less than 3 to 1 based on the minimum yield strength of the materials used for all load supporting structural elements and platform attachment means.”

ERRATA ISSUED 8 MARCH 2013:

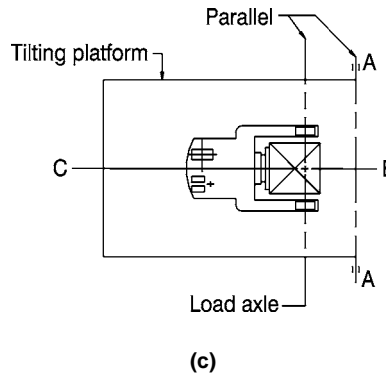
An editorial error was made in ITSDF B56.1-2012. The correction has been made in this version. The corrected version of the standard was posted 20 March 2013 on www.itsdf.org.

<i>Page</i>	<i>Location</i>	<i>Change</i>
5	4.17.2(c)	Delete “and/”. “Make sure required fall restraint means, such as guardrails and/or personal fall protection systems, are in place and properly used (see 7.37.1(d)(1). For personal fall protection system configurations, see Table 1.”
50	7.37.1(d)	Delete “and/”. fall restraint means such as a guard rail and/or a personal fall protection system, whenever the platform can be elevated to a height greater than 1200 mm.

ERRATA ISSUED 9 DECEMBER 2013:

An editorial error was made in ITSDF B56.1-2012. The correction has been made in this version. The corrected version of the standard was posted 9 December 2013 on www.itsdf.org.

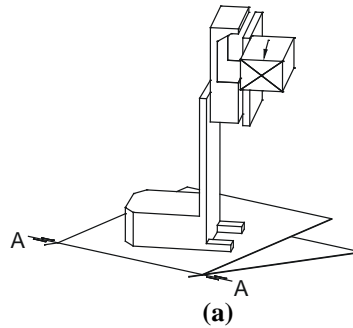
<i>Page</i>	<i>Location</i>	<i>Change</i>
26	Table 3 Sketch (c)	Sketch (c) was inadvertently omitted:



ERRATA ISSUED 7 MARCH 2014:

An editorial error was made in ITSDF B56.1-2012. The correction has been made in this version. The corrected version of the standard was posted 7 March 2014 on www.itsdf.org.

<i>Page</i>	<i>Location</i>	<i>Change</i>
37	Table 12 OPFS 4	Platform Slope, % should be $8 + 1.24 V$
38	Table 13 Sketch (a)	Sketch (a) was inadvertently omitted:

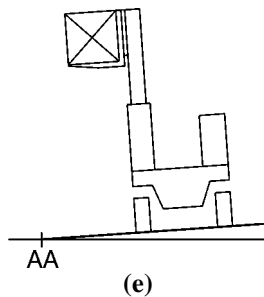


41	Table 14 S4	Platform Slope, % should be $18 + 0.62V$ (max 40)
----	----------------	---

Page
41

Location
Table 14
Sketch (e)

Change
Sketch (a) was inadvertently omitted:



SPECIAL NOTE:

The interpretations to ITSDF B56.1 are included in this edition as a separate section for the user's convenience. The interpretations are not part of this edition or of the Standard itself.

POWERED AND NONPOWERED INDUSTRIAL TRUCKS

B56 SERIES INTRODUCTION

GENERAL

This Standard is one of a series that have been formulated with the Industrial Truck Standard Development Foundation as Sponsor in accordance with the Accredited Organization method, the procedures accredited by the American National Standards Institute, Inc., and the following scope:

Establishment of the safety requirements relating to the elements of design, operation, and maintenance; standardization relating to principal dimensions to facilitate interchangeability, test methods, and test procedures of powered and nonpowered industrial trucks (not including vehicles intended primarily for earth moving or over-the-road hauling); and maintenance of liaison with the International Organization for Standardization (ISO) in all matters pertaining to powered and nonpowered industrial trucks.

One purpose of the Standard is to serve as a guide to governmental authorities having jurisdiction over subjects within the scope of the Standard. It is expected, however, that the Standard will find a major application in industry, serving as a guide to manufacturers, purchasers, and users of the equipment.

For convenience, Standards of Powered and Nonpowered Industrial Trucks have been divided into separate volumes:

Safety Standards

- B56.1 Low Lift and High Lift Trucks
- B56.5 Guided Industrial Vehicles and Automated Functions of Manned Industrial Vehicles
- B56.6 Rough Terrain Forklift Trucks
- B56.8 Personnel and Burden Carriers
- B56.9 Operator Controlled Industrial Tow Trucks
- B56.10 Manually Propelled High Lift Industrial Trucks

Standardization Standards

- B56.11.1 Double Race or Bi-Level Swivel and Rigid Industrial Casters
- B56.11.4 Hook-Type Forks and Fork Carriers for Powered Industrial Forklift Trucks

- B56.11.5 Measurement of Sound Emitted by Low Lift, High Lift, and Rough Terrain Powered Industrial Trucks
- B56.11.6 Evaluation of Visibility From Powered Industrial Trucks
- B56.11.7 Liquefied Petroleum Gas (LPG) Fuel Cylinders (Horizontal or Vertical) Mounting – Liquid Withdrawal – for Powered Industrial Trucks

Safety standards that were previously listed as B56 volumes but now have different identification due to a change in standards development assignments are as follows:

- NFPA 505 Fire Safety Standard for Powered Industrial Trucks – Type Designations, Areas of Use, Maintenance and Operation (formerly B56.2)
- UL 583 Standard for Safety for Electric-Battery-Powered Industrial Trucks (formerly B56.3)
- UL 558 Standard for Safety for Internal Combustion Engine-Powered Industrial Trucks (formerly B56.4)

If adopted for governmental use, the references to other national codes and standards in the specific volumes may be changed to refer to the corresponding governmental regulations.

The use of powered and nonpowered industrial trucks is subject to certain hazards that cannot be completely eliminated by mechanical means, but the risks can be minimized by the exercise of intelligence, care, and common sense. It is therefore essential to have competent and careful operators, physically and mentally fit, and thoroughly trained in the safe operation of the equipment and the handling of the loads. Serious hazards are overloading, instability of the load, obstruction to the free passage of the load, collision with objects or pedestrians, poor maintenance, and use of equipment for a purpose for which it was not intended or designed.

Suggestions for improvement of these Standards, especially those based on actual experience in their application, shall be submitted to the Secretary of the B56 Committee, ITSDF, 1750 K Street NW, Suite 460, Washington DC 20006.

Comments shall be written in accordance with the following format:

(a) specify paragraph designation of the pertinent volume;

(b) indicate suggested change (addition, deletion, revision, etc.);

(c) briefly state reason and/or evidence for suggested change;

(d) submit suggested changes to more than one paragraph in the order in which they appear in the volume.

The appropriate B56 Subcommittee will consider each suggested revision at its first meeting after receipt of the suggested revision(s).

SAFETY STANDARD FOR LOW LIFT AND HIGH LIFT TRUCKS

Part I Introduction

1 SCOPE

This Standard defines the safety requirements relating to the elements of design, operation, and maintenance of low lift and high lift powered industrial trucks controlled by a riding or walking operator, and intended for use on compacted, improved surfaces.

2 PURPOSE

The purpose of the Standard is to promote safety through the design, construction, application, operation, and maintenance of low lift and high lift powered industrial trucks. This Standard may be used as a guide by governmental authorities desiring to formulate safety rules and regulations. This Standard is also intended for voluntary use by other associated with the manufacture or use of low lift and high lift powered industrial trucks.

3 INTERPRETATION

3.1 Mandatory and Advisory Rules

To carry out the provisions of this Standard, all items in Parts II, III, IV, and V are mandatory except those including the word *should*, which are recommendations.

3.2 Classification of Approved Trucks

The word *approved* means the classification or listing of trucks as to fire, explosion, and/or electric shock hazard by a nationally recognized testing laboratory, i.e., a laboratory qualified and equipped to conduct examinations and tests such as those prescribed by Underwriters Laboratories, Incorporated.

3.3 Requests for Interpretation

The B56 Committee will render an interpretation of any requirement of this Standard. Interpretations will be

rendered only in response to a written request sent to the Secretary of the B56 Committee, ITSDF, 1750 K Street NW, Suite 460, Washington DC 20006. The request for interpretation shall be in the following format.

Subject: Cite the applicable paragraph number(s) and provide a concise description.

Edition: Cite the applicable edition of the pertinent standard for which the interpretation is being requested.

Question: Phrase the question as a request for an interpretation of a specific requirement suitable for general understanding and use, not as a request for approval of a proprietary design or situation. The inquirer may also include any plans or drawings that are necessary to explain the question; however, they should not contain proprietary names or information.

ITSDF procedures provide for reconsideration of any interpretation when or if additional information that might affect an interpretation is available. Further, persons aggrieved by an interpretation may appeal to the cognizant ITSDF Committee or Subcommittee. ITSDF does not "approve," "certify," "rate," or "endorse" any item, construction, proprietary device or activity.

3.4 Metric Conversions

The values stated in metric units are to be regarded as the standard. U.S. Customary units are maintained in the User's section (in parentheses) as information for those not familiar with metric units. The conversion to U.S. Customary units is a direct (soft) conversion from SI units.