



**ANSI / CEMA B105.1-2009**  
A REVISION OF  
**ANSI/CEMA B105.1-2003**  
(Approved May 19, 2009)

**CEMA Standard B105.1**

**Specifications for**

**Welded Steel**

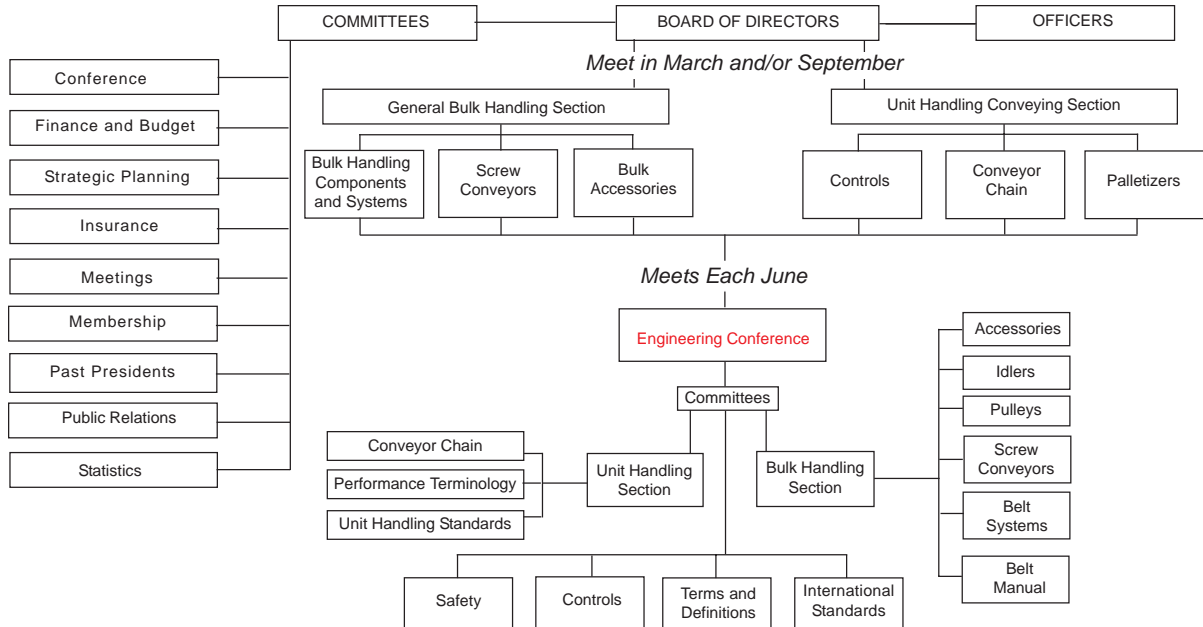
**Conveyor Pulleys**

**With Compression Type Hubs**



*Conveyor Equipment  
Manufacturers Association*

## CEMA ORGANIZATIONAL CHART



For Information on Company Membership  
visit the CEMA Web Site at  
<http://www.cemanet.org>

### SAFETY NOTICE

The Conveyor Equipment Manufacturers Association has developed Industry Standard Safety Labels for use on the conveying equipment of its member companies.

The purpose of the labels is to identify common and uncommon hazards, conditions, and unsafe practices which can injure, or cause the death of, the unwary or inattentive person who is working at or around conveying equipment.

The labels are available for sale to member companies and non-member companies.

A full description of the labels, their purpose, and guidelines on where to place the labels on typical equipment, has been published in CEMA's *Safety Label Brochure* No. 201. The Brochure is available for purchase by members and non-members of the Association. Safety Labels and Safety Label Placement Guidelines, originally published in the Brochure, are also available free on the CEMA Web Site at [http://www.cemanet.org/CEMA\\_Safety\\_Pg.htm](http://www.cemanet.org/CEMA_Safety_Pg.htm)

PLEASE NOTE: Should any of the safety labels supplied by the equipment manufacturer become unreadable for any reason, the equipment USER is then responsible for replacement and location of these safety labels.

Replacement labels and placement guidelines can be obtained by contacting your equipment supplier or CEMA.

## DISCLAIMER

The information provided in this document is advisory only. These recommendations are provided by CEMA in the interest of promoting safety in the work place.

These recommendations are general in nature and are not intended as a substitute for a thorough safety program. Users should seek the advise, supervision or consultation of qualified engineers or other safety professionals.

Any use of this document, the information contained herein, or any other CEMA publication may only be made with the agreement and understanding that the user and the user's company assume full responsibility for the design, safety, specifications, suitability and adequacy of the system component, or mechanical or electrical device designed or manufactured using this information.

The user and the user's company understand and agree that CEMA, its member companies, its officers, agents and employees shall not be liable in any manner under any theory of liability for the user or user's reliance on these recommendations.

The users and the user's company agree to release, hold harmless and indemnify CEMA, its member companies, successors, assigns, officers, agents and employees from any and all claims of liability, costs, fees (including attorney's fees), or damages arising in any way out of the use of this information.

CEMA and its member companies, successors, assigns, officers, agents and employees make no representations or warranties whatsoever, either express or implied, about the information contained in this document, including, but not limited to, representations or warranties that the information and recommendations contained herein conform to any federal, state or local laws, regulations, guidelines or ordinances.

## FOREWORD

Welded steel conveyor pulleys have been in common use since the 1930's. MPTA formed a Steel Pulley Engineering Committee in 1958 to develop recommended pulley load ratings. This Committee consisted of pulley and conveyor engineers who studied available information on pulley design, theoretical stress analysis, and data from actual tests. All parts of the pulley and shaft assembly were included in the study. In May, 1960, recommended load ratings for standard conveyor pulleys were published. The committee has continued its work since then and published the following:

October, 1961 - WELDED STEEL CONVEYOR PULLEY STANDARD, which covered the overall dimensions representing standard practice in welded steel conveyor pulley design at that time.

March, 1962 - MPTA submitted both of the above standards with a letter ballot to a list of substantially concerned organizations. On the basis of suggestions received, the standards were combined and revised.

June, 1966 - The combined revised standard was approved as B105.1 U. S. STANDARD SPECIFICATION FOR WELDED STEEL CONVEYOR PULLEYS.

June, 1974 - The MPTA submitted MPTA 301-1974 to ANSI as a proposed revision of B105.1.

July 23, 1976 - The standard was approved as ANSI B 105.1-1976

December 30, 1983 - The standard was approved as ANSI B105.1-1983

November, 1987 - The standard was transferred to the Conveyor Equipment Manufacturers Association (CEMA).

In 1987, the CEMA Engineering Committee reviewed the standard and decided to revise the method used for determining Drive Shaft diameters so that the method would conform to the ANSI B106.1M-1985 "Design of Transmission Shafting" standard. Also, a runout tolerance on pulley diameters was added. This industry standard is not intended in any way to limit the design of any manufacturer.

ANSI B106.1M was withdrawn in 1994. 1995, the CEMA Eng. Conference determined that the methods used by this former standard were technically sound and consistent with modern fatigue analysis methods. Therefore, the relevant data from ANSI B106.1M remains incorporated in this standard, and in Chapter 8 of CEMA's Publication "Belt Conveyors for Bulk Materials."

In the 2003 edition, the Conveyor Pulley Subsection:

- 1) Revised the Scope to clarify that the standard is not applicable to cone clamping keyless locking devices
- 2) Added Section 2.6 Shaft Runout
- 3) Added information to Section 3.2 and a footnote to Table 2 describing the origin of the Load Ratings

For this 2009 edition, the Conveyor Pulley Committee made the following changes to the 2003 Standard::

- 1) Added capability to use keyless locking devices in Scope and 3.6 Hub and bushing types
- 2) Added data and trapezoidal crown to 2.5 Crown
- 3) Clarified applications where better than standard tolerance is recommended in 2.6 Shaft Runout
- 4) Added Section 2.7 limiting belt speed to 800 fpm.
- 5) Added overload information for 6<sup>th</sup> belt book into 3.4 Overloads
- 6) Standard has had selection method and examples intermingled. Created a generic selection method (4.1 – 4.7) and put examples into Appendix IV.
- 7) Inserted figures and tables in area of use rather than grouped at the end.
- 8) Reduced maximum PIW to 800 in Table 1 of Section 4.1 Pulley Diameter selection.
- 9) Added resultant load updates from 6<sup>th</sup> Belt Book into Section 4.2 and added discussion of use without weight.
- 10) Created section 4.3 overhung loads, added Appendix III for more background and historical reference.
- 11) Added overhung load multiplier to section 4.4 Shaft Fatigue.
- 12) Added Section 4.5 Pulley Fatigue Life.
- 13) Added overhung load and fatigue factors into Section 4.6 Pulley Selection.
- 14) Clarified deflection versus stress control in Table 2. and added shaded area to clarify loads potentially exceeding 800 piw.

*The Conveyor Pulley Subsection of the Conveyor Equipment Manufacturers Association has the responsibility for maintenance of this standard.*

Copyright 2009  
Conveyor Equipment Manufacturers Association  
6724 Lone Oak Blvd  
Naples, FL 34109  
(239) 514-3441  
FAX (239) 514-3470  
<http://www.cemanet.org>

## TABLE OF CONTENTS

### 1. SCOPE

### 2. DIMENSIONS AND TOLERANCES

### 3 PULLEY SELECTION GENERAL INFORMATION

### 4. PULLEY SIZE SELECTION METHOD

#### 4.1 Pulley diameter selection

#### 4.2 Belt resultant loads

#### 4.3 Overhung loads

#### 4.4 Shaft fatigue

#### 4.5 Pulley fatigue

#### 4.6 Pulley shaft size selection

#### 4.7 Pulley availability

### APPENDICES:

#### I. Conversion factors to SI Units

#### II. Shaft deflection formula

#### III. Overhung load derivation and discussion

#### IV. Example Pulley selections

##### 1. Non-drive pulley (no torque or overhung load)

##### 2. Drive pulley (no overhung load)

##### 3. Drive pulley (with overhung loads)

##### 4. Non-symmetric multiple overhung loads (Drive Pulley with backstop)

## 1. SCOPE

**1.1** This standard applies to a series of straight face and crowned face welded steel conveyor pulleys that have a continuous rim and two end discs each with a compression type hub to provide a clamp fit on the shaft. It is not applicable to single disc pulleys, wing or slat type pulleys, or cast pulleys. This standard applies to pulleys using compression type hubs and high pressure keyless locking assemblies. It does not cover pulleys welded to the shaft.

The standard establishes load ratings, allowable variation from nominal dimensions, permissible crown dimensions and such overall dimensions as are normally necessary to establish clearances for location of adjacent parts. It is not intended to specify construction details, other than as outlined above, nor to establish the actual dimensions of any component parts.

The series of pulley sizes and shaft combinations shown in Table 3 and the load ratings shown in Table 2 cover the majority of combinations of welded steel pulleys with compression type hubs normally used in belt conveyor and elevator practice. Only the series shown are covered by this standard.

This standard is not intended to provide thorough guidance on shaft design at all potential failure points. The standard is intended to provide a shaft diameter at the pulley connection consistent with other external components such as bearings and drive components. It is assumed shaft is a consistent diameter throughout and layout clearances between components are minimized.

**1.2** Welded steel conveyor pulleys covered by this standard should not be used with steel cable and other high modulus belts because such belts create stress concentrations and demand manufacturing tolerances beyond the capacities of these pulleys. High modulus belts are defined as those having operating tension ratings greater than 800 PIW or a modulus greater than 80,000 PIW.

## 2. DIMENSIONS AND TOLERANCES

### 2.1 Diameters

Standard welded steel pulley diameters are as shown in Table 3. *All* other sizes are considered special. These nominal diameters apply to straight and crown face pulleys and are for bare pulleys only; they do not include any increase brought about by lagging.

FACE WIDTH	OVER NOMINAL DIAMETER	UNDER NOMINAL DIAMETER
Inches	Inches	Inches
12 thru 26	1/4	1/8
over 26 thru 66	5/8	1/8

### 2.2 Diameter Variations

Permissible diameter variations from nominal diameter are based on face width as follows:

These limitations apply equally to straight face and crown face pulleys with nominal diameter measured at the midpoint of the face width. The diameter is defined as the bare diameter exclusive of lagging.

Permissible diameter variations listed are not to be considered as diameter runout tolerances. Listed nominal diameter variation may occur from one pulley to another. Diameter runout tolerance at midpoint of the bare pulley face is as follows:

DIAMETERS	MAXIMUM TOTAL INDICATOR READING ( TIR )
Inches	Inches
8 thru 24	0.125
over 24 thru 48	0.188
over 48 thru 60	0.250