



**ANSI / CEMA 300-2003**  
**(Approved September 11, 2003)**

**CEMA STANDARD**  
**NO. 300**

**SCREW CONVEYOR**  
**DIMENSIONAL STANDARDS**

---

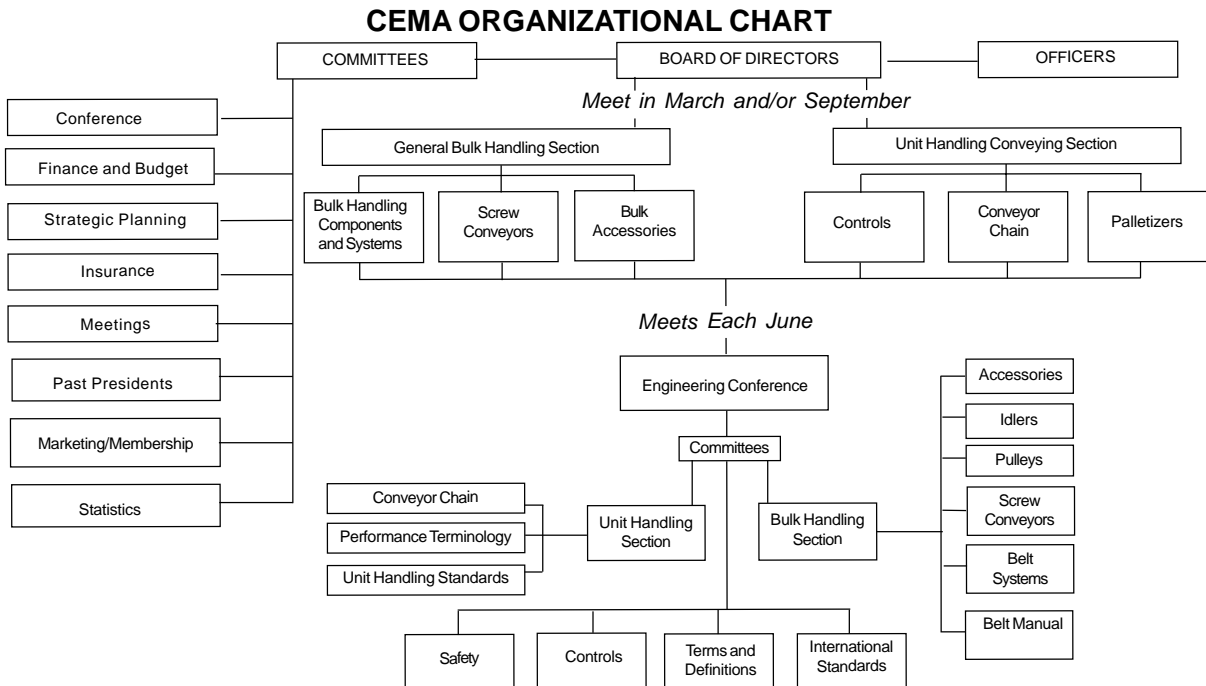


**CONVEYOR EQUIPMENT MANUFACTURERS ASSOCIATION**

**ISBN 1-891171-56-9**  
**PDF Version of**  
**ISBN 1-891171-27-5**

## MEMBERS OF THE CEMA SCREW CONVEYOR PRODUCT SECTION

For a current list of Screw Conveyor Section companies,  
visit CEMA's  
web site: [www.cemanet.org](http://www.cemanet.org).



For Information on Company Membership  
visit the CEMA Web Site at  
<http://www.cemanet.org>

## FOREWORD

This publication, CEMA Standard No. 300 "Screw Conveyor Dimensional Standards", provides recommended dimensional standards for major screw conveyor components. All Dimensions and Tolerances are based on Carbon Steel Fabrication.

These recommended standards are issued in conjunction with CEMA Standard No. 350 "Screw Conveyors".

"Screw Conveyors" is a comprehensive manual of engineering and application practice for screw conveyors.

Both publications are intended to be American National Standards.

## SAFETY NOTICE

The Conveyor Equipment Manufacturers Association has developed Industry Standard Safety Labels for use on the conveying equipment of its member companies.

The purpose of the labels is to identify common and uncommon hazards, conditions, and unsafe practices which can injure, or cause the death of, the unwary or inattentive person who is working at or around conveying equipment.

The labels are available for sale to member companies and non-member companies.

A full description of the labels, their purpose, and guidelines on where to place the labels on typical equipment, has been published in CEMA's *Safety Label Brochure*, Brochure No. 201. The Brochure is available for purchase by members and non-members of the Association. Safety Labels and Safety Label Placement Guidelines, originally published in the Brochure, are also available free on the CEMA Web Site at <http://cemanet.org/safety/index.html>.

A Safety CD, entitled CEMA/V Number 6 "SCREW CONVEYOR, DRAG CONVEYOR, AND BUCKET ELEVATOR SAFETY CD", has also been developed by the CEMA Screw Conveyor Section. It describes key safety practices people should adhere to when working with and around these different conveyors. It is available for purchase from CEMA.

Additionally a free handout WARNING AND SAFETY REMINDERS FOR SCREW, DRAG, AND BUCKET ELEVATOR CONVEYORS is available for free download from the CEMA Web Site's Safety Page

PLEASE NOTE: Should any of the safety labels supplied by the equipment manufacturer become unreadable for any reason, the equipment USER is then responsible for replacement and location of these safety labels.

Replacement labels can be obtained by contacting your equipment supplier or CEMA.

### CONVEYOR EQUIPMENT MANUFACTURERS ASSOCIATION

6724 Lone Oak Blvd  
Naples, Florida 34109  
Web Site: <http://www.cemanet.org>

CEMA Standard No. 300 - Copyright 2003

Printed in the U.S.A.

ISBN 1-891171-27-5

## Disclaimer

The information provided in this document is advisory only. These recommendations are provided by CEMA in the interest of promoting safety in the work place.

These recommendations are general in nature and are not intended as a substitute for a thorough safety program. Users should seek the advise, supervision or consultation of qualified engineers or other safety professionals.

Any use of this document, the information contained herein, or any other CEMA publication may only be made with the agreement and understanding that the user and the user's company assume full responsibility for the design, safety, specifications, suitability and adequacy of the system component, or mechanical or electrical device designed or manufactured using this information.

The user and the user's company understand and agree that CEMA, its member companies, its officers, agents and employees shall not be liable in any manner under any theory of liability for the user or user's reliance on these recommendations.

The users and the user's company agree to release, hold harmless and indemnify CEMA, its member companies, successors, assigns, officers, agents and employees from any and all claims of liability, costs, fees (including attorney's fees), or damages arising in any way out of the use of this information.

CEMA and its member companies, successors, assigns, officers, agents and employees make no representations or warranties whatsoever, either express or implied, about the information contained in this document, including, but not limited to, representations or warranties that the information and recommendations contained herein conform to any federal, state or local laws, regulations, guidelines or ordinances.