

CEMA STANDARD 550-2003

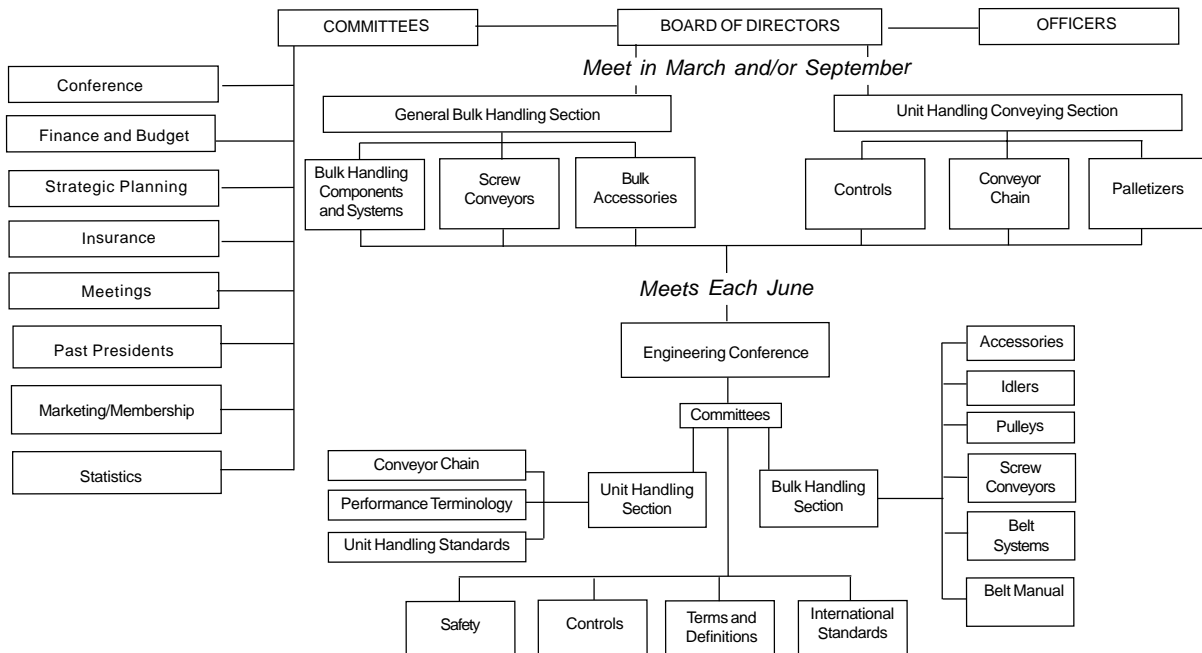
Revision of ANSI/CEMA 550-1970
(R1997)

**CLASSIFICATION
AND
DEFINITIONS
OF
BULK
MATERIALS**



CONVEYOR EQUIPMENT MANUFACTURERS ASSOCIATION

CEMA ORGANIZATIONAL CHART



For Information on Company Membership
visit the CEMA Web Site at
<http://www.cemanet.org>

SAFETY NOTICE

The Conveyor Equipment Manufacturers Association has developed Industry Standard Safety Labels for use on the conveying equipment of its member companies.

The purpose of the labels is to identify common and uncommon hazards, conditions, and unsafe practices which can injure, or cause the death of, the unwary or inattentive person who is working at or around conveying equipment.

The labels are available for sale to member companies and non-member companies.

A full description of the labels, their purpose, and guidelines on where to place the labels on typical equipment, has been published in CEMA's *Safety Label Brochure* No. 201. The Brochure is available for purchase by members and non-members of the Association. Safety Labels and Safety Label Placement Guidelines, originally published in the Brochure, are also available free on the CEMA Web Site at http://www.cemanet.org/CEMA_Safety_Pg.htm

PLEASE NOTE: Should any of the safety labels supplied by the equipment manufacturer become unreadable for any reason, the equipment USER is then responsible for replacement and location of these safety labels.

Replacement labels and placement guidelines can be obtained by contacting your equipment supplier or CEMA.

DISCLAIMER

The information provided in this document is advisory only. These recommendations are provided by CEMA in the interest of promoting safety in the work place. These recommendations are general in nature and are not intended as a substitute for a thorough safety program. Users should seek the advise, supervision or consultation of qualified engineers or other safety professionals. Any use of this document, the information contained herein, or any other CEMA publication may only be made with the agreement and understanding that the user and the user's company assume full responsibility for the design, safety, specifications, suitability and adequacy of the system component, or mechanical or electrical device designed or manufactured using this information. The user and the user's company understand and agree that CEMA, its member companies, its officers, agents and employees shall not be liable in any manner under any theory of liability for the user or user's reliance on these recommendations. The users and the user's company agree to release, hold harmless and indemnify CEMA, its member companies, successors, assigns, officers, agents and employees from any and all claims of liability, costs, fees (including attorney's fees), or damages arising in any way out of the use of this information. CEMA and its member companies, successors, assigns, officers, agents and employees make no representations or warranties whatsoever, either express or implied, about the information contained in this document, including, but not limited to, representations or warranties that the information and recommendations contained herein conform to any federal, state or local laws, regulations, guidelines or ordinances.

CLASSIFICATION & DEFINITIONS OF BULK MATERIALS

FOREWORD

The CEMA Engineering Conference recognizes that the basis of all bulk material conveyor engineering is the precise definition and accurate classification of materials according to their individual handling characteristics under a specific combination of conditions of temperature, humidity, sizes and distribution of lumps, friability, and so on, including all factors that influence the selection of proper types and sizes of conveyors, horizontal, inclined or vertical.

This exacting task of cataloging bulk materials was assigned by the Conference to the CEMA Committee for Materials Classification & Definition, a task that was greatly magnified by the increasing flow of new materials from the world's geometrically expanding technology in all fields and the alteration of older materials into forms with different handling characteristics.

This task can, therefore, never be considered as having been completed. The Committee fully realizes that its conclusions at the time of any publication represents only that part of the work that has been completed to date.

For that reason, it is the earnest recommendation of the members of the Conveyor Equipment Manufacturers Association that competent engineering and technological assistance be sought whenever there is the slightest doubt as to how any material will behave under specific conditions.

It is desirable and necessary that materials and conditions be described precisely and completely whenever equipment manufacturers and consulting engineers are called in to make recommendations.

Prepared as a service to the industry by the CEMA Bulk Handling Section

CONVEYOR EQUIPMENT MANUFACTURERS ASSOCIATION

6724 Lone Oak Blvd.
Naples, Florida 34109
(239) 514-3441
Fax: (239) 514-3470
E-Mail: cema@cemanet.org
Web Site: <http://www.cemanet.org>

**Standard No. 550 - Copyright 2003 [PDF Version](#)
Conveyor Equipment Manufacturers Association**

ISBN 1-891171-47-X

**CLICK BOX BELOW
TO VIEW THE
REFERENCED
CHANGES**

SUMMARY OF CHANGES IN THIS EDITION

This 2003 Edition updates, Chapter 1, Table 2, “Comparison of U.S. Standard Sieves and Tyler Sieves”.

The updated table has been renamed “Comparison of U.S., ISO, and Tyler Standard Sieves”. It incorporates ISO Sieve designations as well as the current U.S. measurement changes to accommodate ISO Standard 133. These changes are also reflected in changes to Table 6 “Average Size System from Screen Analysis”.

This Edition includes a more readable version of Chapter 2, Figure 9, “CEMA Size Code Classes vs Particle Size - Inches.”

This Edition updates, Chapter 3, “The Material Table”.

The updated table amalgamates virtually all of the CEMA Material Handling Characteristics Data that the Association has available and has published in its two other documents which deal with material handling characteristics; Belt Conveyors for Bulk Materials and CEMA Book 350: Screw Conveyors.

To keep this document updated, and of maximum utility to the industry, we welcome, and are prepared to consider for inclusion in future editions, new material and characterizations submitted to us from any members of the bulk material conveying industry.

**CEMA Standard No. 550-2003
Reviewed and Revised by
Bulk Handling Section
of the
CEMA Engineering Conference**

CONTENTS

CHAPTER

1	TERMINOLOGY: DEFINITIONS, TEST PROCEDURES OR EXAMPLES	PAGE
1.	Physical Characteristics	1
A- 1	Abrasiveness	1
A- 2	Angle of external friction	3
A- 3	Angle of internal friction	4
A- 4	Angle of maximum inclination	5
A- 5	Angle of repose	5
A- 6	Angle of slide	7
A- 7	Angle of surcharge	7
A- 8	Bulk density - loose	9
A- 9	Bulk density - vibrated	11
A-10	Cohesiveness	13
A-11	Elevated temperature	14
A-12	Flowability - flow function	14
A-13	Lumps - size and weight	15
A-14	Specific gravity	16
A-15	Moisture content	16
A-16	Particle hardness	19
A-17	Screen analysis and particle size consist	21
A-18	Sized and unsized material	23
2.	Hazards Affecting Conveyability	24
B-1	Aeration - fluidity	24
B-2	Becomes plastic or tends to soften	25
B-3	Builds up and hardens	25
B-4	Corrosive	25
B-5	Generates static electricity	26
B-6	Degradable - size breakdown	27
B-7	Deteriorates in storage - decomposition	27
B-8	Dusty	28
B-10	Explosiveness	28
B-11	Flammability	29
B-12	Harmful dust, toxic gas or fumes	29
B-13	Hygroscopic	30
B-14	Interlocks, mats and agglomerates	30
B-15	Oils or fats present	31
B-16	Packs under pressure	31
B-17	Particle shape	31
B-18	Stickiness - adhesion	32
B-19	Contaminable	33
B-20	Very light, fluffy - may be windswept	34

CHAPTER

II MATERIAL CLASSIFICATION CODE

3. Material Classification Code Chart	35
4. Material Classification Code Description	36
A. Bulk Density Coding System	36
B. Size Coding System	36
C. Flowability Coding System	40
D. Abrasive Coding System	41
E. Miscellaneous Properties and Hazards Coding System	41

III TABLES OF MATERIALS AND THEIR CHARACTERISTICS

5. Preface To Material Table	42
6. Material Classification Code Chart	43
7. Material Tables	44
A. Adipic Acid ... to ... Zinc Ore, Roasted	44-64
8. Table of Material Characteristics	65

IV LIST OF MINIMUM CHARACTERISTICS FURNISHED WITH INQUIRIES FOR QUOTATIONS FOR BULK MATERIAL HANDLING EQUIPMENT

V APPENDIX

9. Bibliography	67
10. Shear Testing Procedure	73
A. Equipment	73
B. Definitions	73
C. Procedure	75
D. Curve Plotting of Data	77

CHAPTER I

Terminology: Definitions, Test Procedures or Examples

This chapter is devoted to establishing consistent terminology for the various properties and characteristics of bulk materials that are considered to affect conveyability or design in the proper selection of materials handling equipment. Definitions are given and test procedures are established where practicable.

Two general classes are established. The first class is "Physical Characteristics" and includes those properties that can generally be physically tested and numerical values determined. These carry an "A" prefix. The second class is "Hazards Affecting Conveyability." This latter group is more difficult to test and determine quantitative results. They carry a "B" prefix. Where possible, suggested test procedures are given to determine a qualitative, generally yes or no, answer. Typical examples of materials having the particular property being described are given to facilitate a better understanding of the characteristic involved.

If a given material sample is analyzed for all thirty-seven characteristics given in the following pages, much more will be known about the material than generally found heretofore and the problem of proper equipment selection for the application will be made easier. A classification coding system is established in Chapter II and a suggested format for listing these characteristics is contained in Chapter III.

1. PHYSICAL CHARACTERISTICS

A-I Abrasiveness

Definition: Abrasiveness is a combination of the physical characteristics of a material that enables it to abrade particles from surfaces with which it comes into moving contact.

Test: It seems from observations that the following 4 characteristics are those which would contribute to the abrasive character of a material.

- (1) Particle hardness (See A-16)
- (2) Particle shape (See B-17)
- (3) Bulk Material Density (See A-8)
- (4) Size (See A-17 & A-18)

The following factors are assigned to each of the above characteristics:

Hardness

Mohs No.	Factor
1	1
2	4
3	9
4	16
5	25
6	36
7	49
8	64
9	81
10	100