



ANSI / CEMA 300-2009
A Revision of ANSI / CEMA 300-2003
(Approved April 1, 2009)

CEMA STANDARD
NO. 300

SCREW CONVEYOR
DIMENSIONAL STANDARDS



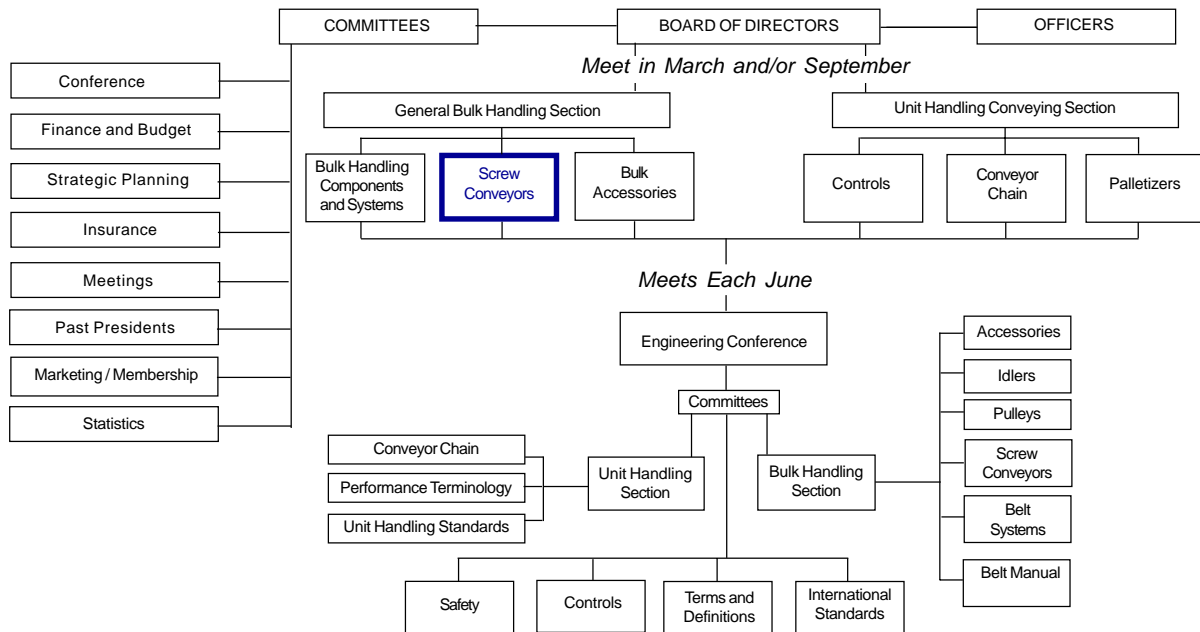
CONVEYOR EQUIPMENT MANUFACTURERS ASSOCIATION

ISBN 978-1-891171-39-0

MEMBERS OF THE CEMA SCREW CONVEYOR PRODUCT SECTION

For a current list of Screw Conveyor
Section companies, visit CEMA's
web site: www.cemanet.org.

CEMA ORGANIZATIONAL CHART



For Information on Company Membership
visit the CEMA Web Site at
<http://www.cemanet.org>

DISCLAIMER

The information provided in this document is advisory only. These recommendations are provided by CEMA in the interest of promoting safety in the work place. These recommendations are general in nature and are not intended as a substitute for a thorough safety program. Users should seek the advise, supervision or consultation of qualified engineers or other safety professionals. Any use of this document, the information contained herein, or any other CEMA publication may only be made with the agreement and understanding that the user and the user's company assume full responsibility for the design, safety, specifications, suitability and adequacy of the system component, or mechanical or electrical device designed or manufactured using this information. The user and the user's company understand and agree that CEMA, its member companies, its officers, agents and employees shall not be liable in any manner under any theory of liability for the user or user's reliance on these recommendations. The users and the user's company agree to release, hold harmless and indemnify CEMA, its member companies, successors, assigns, officers, agents and employees from any and all claims of liability, costs, fees (including attorney's fees), or damages arising in any way out of the use of this information. CEMA and its member companies, successors, assigns, officers, agents and employees make no representations or warranties whatsoever, either express or implied, about the information contained in this document, including, but not limited to, representations or warranties that the information and recommendations contained herein conform to any federal, state or local laws, regulations, guidelines or ordinances.

FOREWORD

This publication, CEMA Standard No. 300 "Screw Conveyor Dimensional Standards", provides recommended dimensional standards for major screw conveyor components. All Dimensions and Tolerances are based on Carbon Steel Fabrication.

These recommended standards are issued in conjunction with CEMA Standard No. 350 "Screw Conveyors".

"Screw Conveyors" is a comprehensive manual of engineering and application practice for screw conveyors.

Both publications are intended to be American National Standards.

SUMMARY OF CHANGES

This 2009 Edition revises the 2330 Edition by adding a 34th Standard - For Shaftless Conveyors.

SAFETY NOTICE

The Conveyor Equipment Manufacturers Association has developed Industry Standard Safety Labels for use on the conveying equipment of its member companies.

The purpose of the labels is to identify common and uncommon hazards, conditions, and unsafe practices which can injure, or cause the death of, the unwary or inattentive person who is working at or around conveying equipment.

The labels are available for sale to member companies and non-member companies.

A full description of the labels, their purpose, and guidelines on where to place the labels on typical equipment, has been published in CEMA's *Safety Label Brochure*, Brochure No. 201. The Brochure is available for purchase by members and non-members of the Association. Safety Labels and Safety Label Placement Guidelines, originally published in the Brochure, are also available free on the CEMA Web Site at http://www.cemanet.org/CEMA_Safety_Pg.htm

PLEASE NOTE: Should any of the safety labels supplied by the equipment manufacturer become unreadable for any reason, the equipment USER is then responsible for replacement and location of these safety labels.

Replacement labels and placement guidelines can be obtained by contacting your equipment supplier or CEMA.

CONVEYOR EQUIPMENT MANUFACTURERS ASSOCIATION

6724 Lone Oak Blvd
Naples, Florida 34109
Web Site: <http://www.cemanet.org>

CEMA Standard No. 300 - Copyright 2009

Printed in the U.S.A.

ISBN 978-1-891171-39-0

TABLE OF CONTENTS

CEMA SCREW CONVEYOR STANDARDS INCLUDED IN THIS DOCUMENT

- Standard 300-001: Helicoid Conveyor Screws
- Standard 300-002: Sectional Flight Conveyor Screws
- Standard 300-003: Cut-and-Folded Flight Conveyor Screw
- Standard 300-004: Cut Flight Conveyor Screws
- Standard 300-005: Conveyor Screws with Paddles
- Standard 300-006: Ribbon Flight Conveyor Screws
- Standard 300-007: Paddle Conveyor Screws
- Standard 300-008: Paddles
- Standard 300-009: Angle U-Trough
- Standard 300-010: Flared Trough
- Standard 300-011: Conveyor Discharge Spouts, Plain
- Standard 300-012: Hand Slides for Conveyor Discharge Spouts
- Standard 300-013: U-Trough End Plates
- Standard 300-014: Flared Trough End Plates
- Standard 300-015: U-Trough Flange Bolt Hole Patterns
- Standard 300-016: Flared Trough Flange Bolt Hole Patterns
- Standard 300-017: Drive Shafts
- Standard 300-018: End Shafts
- Standard 300-019: Coupling Shafts
- Standard 300-020: Type 216 Hangers
- Standard 300-021: Type 226 Hangers
- Standard 300-022: Coupling Bolts with Nuts
- Standard 300-023: U-Trough Flanged Covers
- Standard 300-024: U-Trough Semi-Flanged Covers
- Standard 300-025: U-Trough Flat Covers
- Standard 300-026: Double Flanged U-Troughs
- Standard 300-027: Type 270 Ball Bearing Hangers
- Standard 300-028: Type 326 Hangers
- Standard 300-029: Type 316 Hangers
- Standard 300-030: Packing Seal Housing
- Standard 300-031: Shrouds
- Standard 300-032: Conveyor Inlet Spout, Flanged
- Standard 300-033: Conveyor Discharge Spouts
- [Standard 300-034: Shaftless Conveyor Screw](#)