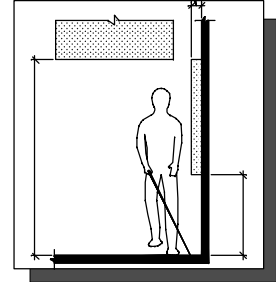
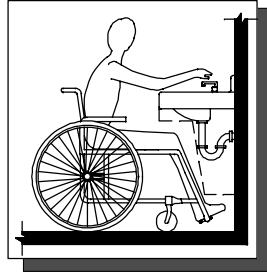


American National Standard

ICC/ANSI A117.1-1998



*Accessible and Usable
Buildings and Facilities*



**ICC/ANSI
A117.1-1998**

American National Standard

**Accessible and Usable
Buildings and Facilities**

Secretariat

**International Code Council
5203 Leesburg Pike, Suite 708
Falls Church, VA 22041**

Approved February 13, 1998

**American National Standards Institute, Inc.
11 West 42nd Street
New York, NY 10036**

Third Printing

First Published October 1998

Second Printing December 1999

Third Printing April 2001

ISBN 1-58001-029-6

COPYRIGHT © 1998, 1999

by

INTERNATIONAL CODE COUNCIL, INC.

ALL RIGHTS RESERVED. This Accessible and Usable Buildings and Facilities (ICC/ANSI A117.1-1998) is a copyrighted work owned by the International Code Council, Inc. Without advance written permission from the copyright owner, no part of this book may be reproduced, distributed, or transmitted in any form or by any means, including, without limitation, electronic, optical or mechanical means (by way of example, and not limitation, photocopying, or recording by or in an information storage retrieval system). For information on permission to copy material exceeding fair use, please contact: President, International Code Council, 5203 Leesburg Pike, Suite 708, Falls Church, Virginia, 22041-3401. (Phone 703-931-4533).

Trademarks: "International Code Council," the "International Code Council" logo and "Accessible and Usable Buildings and Facilities (ICC/ANSI A117.1-1998)" are trademarks of the International Code Council, Inc. The "BOCA" logo is a trademark of Building Officials and Code Administrators International, Inc. The "ICBO" logo is a trademark of the International Conference of Building Officials. The "SBCCI" logo is a trademark of the Southern Building Code Congress International, Inc.

Published in cooperation with:

BUILDING OFFICIALS AND CODE ADMINISTRATORS INTERNATIONAL, INC.

4051 West Flossmoor Road • Country Club Hills, Illinois 60478-5795
(708) 799-2300

INTERNATIONAL CONFERENCE OF BUILDING OFFICIALS

5360 Workman Mill Road • Whittier, California 90601-2298
(562) 699-0541

SOUTHERN BUILDING CODE CONGRESS INTERNATIONAL, INC.

900 Montclair Road • Birmingham, Alabama 35213-1206
(205) 591-1853

PRINTED IN THE U.S.A.

American National Standard

Approval of an American National Standard requires verification by ANSI that the requirements for due process, consensus, and other criteria for approval have been met by the standards developer.

Consensus is established when in the judgement of the ANSI Board of Standards Review, substantial agreement has been reached by directly and materially affected interests. Substantial agreement means much more than a simple majority, but not necessarily unanimity. Consensus requires that all views and objections be considered, and that a concerted effort be made toward their resolution.

The use of American National Standards is completely voluntary; their existence does not in any respect preclude anyone, whether he or she has approved the standards or not, from manufacturing, marketing, purchasing, or using products, processes, or procedures not conforming to the standards.

The American National Standards Institute does not develop standards and will in no circumstances give an interpretation of any American National Standard. Moreover, no person shall have the right or authority to issue an interpretation of an American National Standard in the name of the American National Standards Institute. Requests for interpretations should be addressed to the secretariat or sponsor whose name appears on the title page of this standard.

CAUTION NOTICE: This American National Standard may be revised or withdrawn at any time. The procedures of the American National Standards Institute require that action be taken periodically to reaffirm, revise, or withdraw this standard. Purchasers of American National Standards may receive current information on all standards by calling or writing the American National Standards Institute.

This is a preview of "ICC/ANSI A117.1-1998". [Click here to purchase the full version from the ANSI store.](#)

FOREWORD

(This Foreword is not part of American National Standard A117.1-1998.)

The 1961 edition of ANSI Standard A117.1 presented the first criteria for accessibility to be approved as an American National Standard and was the result of research conducted by the University of Illinois under a grant from the Easter Seal Research Foundation. The National Easter Seal Society and the President's Committee on Employment of People with Disabilities became members of the Secretariat and the Standard was reaffirmed in 1971.

In 1974, the U.S. Department of Housing and Urban Development joined the Secretariat and sponsored needed research, which resulted in the 1980 edition. After further revision that included a special effort to remove application criteria (scoping requirements), the 1986 edition was published and, when requested in 1987, the Council of American Building Officials (CABO) assumed the Secretariat. Central to the intent of the change in the Secretariat was the development of a standard that, when adopted as part of a building code, would be compatible with the building code and its enforcement. This edition has largely achieved that goal. In 1998, CABO became the International Code Council (ICC).

This edition has been substantially reformatted. Illustrative figures are located adjacent to corresponding text to simplify the use of the Standard. Unless specified otherwise, figures are not part of the Standard. Should a figure appear to illustrate criteria that differ with the text of the Standard, the criteria stated in the text govern.

Suggestions for improving this edition will be welcome. They should be sent to ICC, Secretariat, ANSI A117 Committee, Suite 708, 5203 Leesburg Pike, Falls Church, VA 22041.

This Standard was processed and approved for submittal to ANSI by the Accredited Standards Committee on Architectural Features and Site Design of Public Buildings and Residential Structures for Persons with Handicaps (A117). Committee approval of the Standard does not necessarily imply that all Committee members voted for its approval. At the time it approved this Standard, the A117 Committee had the following members:

Chair	Kenneth M. Schoonover, PE (BOCA)
Vice Chair	Soy Williams, AIA (PVA)

Organizational Member

Representative

Accessibility Equipment Manufacturers Association	Patrick Bass
American Bankers Association	Nessa Feddis
American Council of the Blind	Julie Carroll Patricia Beattie (Alt)
American Foundation for the Blind	Elga Joffee Scott Marshall (Alt) Alan Dinsmore (Alt)
American Hotel and Motel Association	Robert Elliott
American Institute of Architects	Marvin J. Cantor, FAIA Scott Fazekas, AIA, CBO (Alt)
American Occupational Therapy Association	Mary Shaheen, OTR/L Anne Long Morris, EdD, OTR/L (Alt)
American Society of Interior Designers	Wm. L. Wilkoff, FASID, IIDA Barbara J. Huelat, ASID (Alt)
American Society of Plumbing Engineers	Robert Evans, Jr., CIPE Peter J. Johnson, CIPE (Alt)
American Society of Safety Engineers	William Marletta David A. de Vries (Alt)

Association for Safe and Accessible Products	Edward Steinfeld
Awards and Recognition Association	Kathy Wilson William Townsend (Alt)
Bell Communications Research, Inc	William G. Keenan
Builders Hardware Manufacturers Association, Inc	Dave Gilda Richard Hudnut (Alt)
Building Officials and Code Administrators Intl, Inc	Kenneth M. Schoonover, PE Michael Pfeiffer, PE (Alt)
Building Owners and Managers Association Intl	Lawrence G. Perry, AIA James C. Dinegar (Alt)
Disability Rights Education and Defense Fund	Marilyn Golden Logan Hopper (Alt)
International Code Council	Shahriar Amiri
International Conference of Building Officials	William D. Wall, PE Rick Okawa, PE (Alt)
International Sign Association	Teresa Cox Bob Wallace (Alt) Sharon Toji (Alt)
Little People of America, Inc.	Angela Van Etten, J.D.
National Apartment Association	Ronald G. Nickson
National Association of Home Builders	Jay Murdoch Ron Burton (Alt)
National Association of the Deaf	Don Sievers Nancy J. Bloch (Alt)
National Conference of States on Building Codes and Standards	William E. O'Neil
National Electrical Manufacturers Association	Rein Haus
National Elevator Industry, Inc	Edward A. Donoghue Ralph Droste (Alt) George Kappenhagen (Alt)
National Federation of the Blind	James Gashel Dr. Harold Snider (Alt)
National Fire Protection Association	Ron Coté, PE
National Institute for Tall People	Carlisle Bean
Paralyzed Veterans of America	Kim A. Beasley, AIA Soy Williams (Alt)
Plumbing Manufacturers Institute	Jack Lancaster Richard W. Church (Alt)
President's Committee of Employment of People with Disabilities	Maggie Roffee Ellen D. Daly (Alt)
Self Help for Hard of Hearing People, Inc	Jack O'Keeffe
Society for Environmental Graphic Design	Kenneth A. Ethridge, Jr., AIA
Southern Building Code Congress International, Inc	Mark W. Wales, CBO Richard Vognild, PE, CBO (Alt)
United Cerebral Palsy Associations	Robert Dale Lynch, FAIA Michael Morris (Alt)
US Architectural and Transportation Barriers Compliance Board	Marsha K. Mazz Scott Windley (Alt)
US Department of Agriculture	Larry B. Fleming Samuel Hodges, III (Alt)
US Department of Housing and Urban Development	Nelson A. Carbonell Cheryl D. Kent (Alt) Alan Rothman (Alt)
US Department of Veterans Affairs	Dennis Hancher

World Institute on Disability Hale Zukas

Individual Members

Brian D. Black

Patrick J. Higgins

Jake L. Pauls

Special recognition is provided to the following individuals who also contributed as members of the committee during this review cycle:

Richard Hudnut (Chair 1987–1997)

Frank Bosak (Vice-Chair 1987–1997)

John P. S. Salmen

This is a preview of "ICC/ANSI A117.1-1998". [Click here to purchase the full version from the ANSI store.](#)

Contents

Chapter 1. Application and Administration	1
101 Purpose	1
102 Provisions for Adults	1
103 Compliance Alternatives	1
104 Conventions	1
105 Referenced American National Standards	1
106 Definitions	1
Chapter 2. Scoping	5
201 General	5
202 Dwelling Units	5
203 Administration	5
Chapter 3. Building Blocks	7
301 General	7
302 Floor or Ground Surfaces	7
303 Changes in Level	7
304 Wheelchair Turning Space	8
305 Clear Floor or Ground Space	8
306 Knee and Toe Clearance	9
307 Protruding Objects	10
308 Reach Ranges	11
309 Operable Parts	12
Chapter 4. Accessible Routes	13
401 General	13
402 Accessible Routes	13
403 Walking Surfaces	13
404 Doors and Doorways	14
405 Ramps	18
406 Curb Ramps	20
407 Elevators	21
408 Wheelchair (Platform) Lifts	31
Chapter 5. General Site and Building Elements	33
501 General	33
502 Parking Spaces	33
503 Passenger Loading Zones	33
504 Stairways	34
505 Handrails	35
506 Windows	38
507 Bus Stop Pads	38
Chapter 6. Plumbing Elements and Facilities	39
601 General	39
602 Drinking Fountains and Water Coolers	39
603 Toilet and Bathing Rooms	39
604 Water Closets and Toilet Compartments	40
605 Urinals	43
606 Lavatories and Sinks	43
607 Bathtubs	44
608 Shower Compartments	45
609 Grab Bars	47
610 Seats	49
611 Laundry Equipment	50

Chapter 7. Communication Elements and Features	51
701 General	51
702 Alarms	51
703 Signs	56
704 Telephones	60
705 Detectable Warnings	61
706 Assistive Listening Systems	62
707 Automatic Teller Machines (ATMs) and Fare Machines	62
Chapter 8. Special Rooms and Spaces	65
801 General	65
802 Auditorium and Assembly Areas	65
803 Dressing, Fitting, and Locker Rooms	66
804 Kitchens	66
Chapter 9. Built-In Furnishings and Equipment	67
901 General	67
902 Seating at Tables, Counters, and Work Surfaces	67
903 Benches	67
904 Checkout and Service Counters	67
905 Storage Facilities	68
Chapter 10. Dwelling Units	69
1001 General	69
1002 Type A Dwelling Units	69
1003 Type B Dwelling Units	74
1004 Dwelling Units with Accessible Communication Features	78
1992-1998 ANSI A117.1 Cross Reference	81
Errata to ICC/ANSI A117.1-1998, First Printing, Second Printing	83

List of Figures

Chapter 1. Application and Administration	1
Figure 104.2 Graphic Convention for Figures	2
Chapter 2. Scoping (No figures)	5
Chapter 3. Building Blocks	7
Figure 302.2 Carpet on Floor or Ground Surfaces	7
Figure 302.3 Openings in Floor or Ground Surfaces	7
Figure 303.2 Vertical Changes in Level	7
Figure 303.3 Beveled Changes in Level	7
Figure 304.3 Size of Wheelchair Turning Space	8
Figure 305.5 Position of Clear Floor or Ground Space	8
Figure 305.7 Maneuvering Clearance in an Alcove	9
Figure 306.2 Toe Clearance	9
Figure 306.3 Knee Clearance	10
Figure 307.2 Limits of Protruding Objects	10
Figure 307.3 Post-Mounted Protruding Objects	10
Figure 307.4 Reduced Vertical Clearance	11
Figure 308.2.1 Unobstructed Forward Reach	11
Figure 308.2.2 Obstructed High Forward Reach	11
Figure 308.3.1 Unobstructed Side Reach	12
Figure 308.3.2 Obstructed High Side Reach	12
Chapter 4. Accessible Routes	13
Figure 403.5 Clear Width of an Accessible Route	13
Figure 403.5.1 Clear Width at Turn	14
Figure 404.2.3 Clear Width of Doorways	14
Figure 404.2.4.1 Maneuvering Clearance at Swinging Doors	15
Figure 404.2.4.2 Maneuvering Clearance at Sliding and Folding Doors	17
Figure 404.2.6 Two Doors in Series	17
Figure 405.7 Ramp Landings	19
Figure 405.9 Ramp Edge Protection	20
Figure 406.3 Counter Slope of Surfaces Adjacent to Curb Ramps	20
Figure 406.4 Sides of Curb Ramps	21
Figure 406.11 Diagonal Curb Ramps	21
Figure 406.12 Islands	22
Figure 407.2.2 Elevator Call Buttons	22
Figure 407.2.3.2.1 Height of Elevator Visible Signals	22
Figure 407.2.3.2.2 Size of Elevator Visible Signals	23
Figure 407.2.4 Tactile Characters on Elevator Hoistway Entrances	23
Figure 407.2.8 Inside Dimensions of Elevator Cars	24
Figure 407.2.11.1 Elevator Car Control Buttons	25
Figure 407.3.5 Destination-Oriented Elevator Car Identification	28
Figure 407.4.6 Inside Dimensions of Limited Use/Limited Application (LULA) Elevator Cars	29
Figure 407.5.5 Existing Car Configurations	31
Figure 407.5.6.1 Elevator Car Control Buttons in Existing Elevators	31
Chapter 5. General Site and Building Elements	33
Figure 502.2 Vehicle Parking Space	33
Figure 502.3 Parking Space Access Aisle	34
Figure 503.3 Passenger Loading Zone Access Aisle	34
Figure 504.2 Treads and Risers for Accessible Stairways	34
Figure 504.5 Stair Nosings	35
Figure 505.4 Handrail Height	36
Figure 505.5 Handrail Clearance	36
Figure 505.7 Handrail Cross Section	36
Figure 505.10.1 Top and Bottom Handrail Extensions at Ramps	37

Figure 505.10.2	Top Handrail Extensions at Stairs	37
Figure 505.10.3	Bottom Handrail Extensions at Stairs	37
Chapter 6. Plumbing Elements and Facilities		39
Figure 602.5	Drinking Fountain Spout Location	39
Figure 604.2	Water Closet Location	40
Figure 604.3.1	Size of Clearance for Water Closet	40
Figure 604.4	Height of Water Closet	40
Figure 604.5.1	Side Wall Grab Bar for Water Closet	41
Figure 604.5.2	Rear Wall Grab Bar for Water Closet	41
Figure 604.7	Dispenser Location	41
Figure 604.8.1.1	Wheelchair Accessible Toilet Compartments	42
Figure 604.8.1.4	Toilet Compartment Toe Clearance	42
Figure 604.8.3	Toilet Compartment Doors	43
Figure 606.3	Height of Lavatories and Sinks	44
Figure 607.2	Clearance for Bathtubs	44
Figure 607.4.1	Grab Bars for Bathtubs with Permanent Seats	45
Figure 607.4.2	Grab Bars for Bathtubs without Permanent Seats	45
Figure 607.5	Location of Bathtub Controls	45
Figure 608.2.1	Transfer-Type Shower Compartment	46
Figure 608.2.2	Standard Roll-In-Type Shower Compartment	46
Figure 608.2.3	Alternate Roll-In-Type Shower Compartment	46
Figure 608.3.1	Grab Bars in Transfer-Type Showers	46
Figure 608.3.2	Grab Bars in Roll-In-Type Showers	47
Figure 608.5	Controls in Transfer-Type Showers	48
Figure 608.6	Location of Shower Spray Unit	48
Figure 609.2	Size of Grab Bars	48
Figure 609.3	Spacing of Grab Bars	48
Figure 610.2	Bathtub Seat	49
Figure 610.3.1	Rectangular Shower Compartment Seat	50
Figure 610.3.2	L-Shaped Shower Compartment Seat	50
Figure 611.4	Height of Laundry Equipment	50
Chapter 7. Communication Elements and Features		51
Figure 702.3.3.1	Location of Wall-Mounted Appliances	51
Figure 702.3.3.2	Location of Ceiling-Mounted Appliances	52
Figure 702.3.5.1	Appliance Spacing in Corridors	53
Figure 702.3.6.2	Appliance Location in Sleeping Rooms	53
Figure 703.2.4.4	Character Height	56
Figure 703.2.8	Mounting Location at Doors	57
Figure 703.6.1	Pictogram Field	59
Figure 703.7.2.1	International Symbol of Accessibility	60
Figure 703.7.2.2	International TTY Symbol	60
Figure 703.7.2.3	Volume-Controlled Telephone	60
Figure 703.7.2.4	International Symbol of Access for Hearing Loss	60
Figure 704.2.1	Clear Floor or Ground Space for Telephones	60
Figure 705.3.1.1	Truncated Dome Size	61
Chapter 8. Special Rooms and Spaces		65
Figure 802.3	Width of a Wheelchair Space in Auditorium and Assembly Areas ..	65
Figure 802.4	Depth of a Wheelchair Space in Auditorium and Assembly Areas ..	65
Chapter 9. Built-In Furnishings and Equipment		67
Figure 904.2	Height of Checkout Counters	67
Chapter 10. Dwelling Units		69
Figure 1002.7.7.3	Location of Controls in Private Residence Elevators	70
Figure 1002.11.5.1	Location of Water Closet in Type A Dwelling Units	71
Figure 1002.11.5.2	Water Closet Clearance in Type A Dwelling Units	71
Figure 1002.12.3	Work Surface in Kitchen	73
Figure 1002.12.4	Kitchen Sink	73

Chapter 1. Application and Administration

101 Purpose

The specifications in Chapters 3 through 9, and Sections 1002 and 1004 of this standard make sites, facilities, buildings and elements accessible to and usable by people with such physical disabilities as the inability to walk, difficulty walking, reliance on walking aids, blindness and visual impairment, deafness and hearing impairment, incoordination, reaching and manipulation disabilities, lack of stamina, difficulty interpreting and reacting to sensory information, and extremes of physical size. The intent of these sections of the standard is to allow a person with a physical disability to independently get to, enter, and use a site, facility, building, or element.

Section 1003 of this standard provides technical criteria for Type B dwelling units. These criteria are intended to be consistent with the intent of only the technical requirements of the Federal Fair Housing Act Accessibility Guidelines. These Type B dwelling units are intended to supplement, not replace, accessible Type A dwelling units as specified in this standard.

This standard is intended for adoption by government agencies and by organizations setting model codes to achieve uniformity in the technical design criteria in building codes and other regulations.

101.1 Applicability. Sites, facilities, buildings, and elements required to be accessible shall comply with the applicable provisions of Chapters 3 through 9.

EXCEPTIONS:

1. Type A dwelling units shall comply with Section 1002.
2. Type B dwelling units shall comply with Section 1003.
3. Dwelling units required to have accessible communication features shall comply with Section 1004.

102 Provisions for Adults

The specifications in this standard are based on adult dimensions and anthropometrics.

103 Compliance Alternatives

Nothing in this standard is intended to prevent the use of designs, products, or technologies as alternatives to those prescribed by this standard, where equivalent or superior accessibility and usability are provided and such equivalency is approved by the administrative authority adopting this standard.

104 Conventions

104.1 Dimensions. Dimensions that are not stated as "maximum" or "minimum" are absolute. All dimensions are subject to conventional industry tolerances.

104.2 Graphics. Unless specifically stated otherwise, figures included herein are not considered part of the standard and are provided for informational purposes only.

105 Referenced American National Standards

105.1 General. The American National Standards listed in Section 105.2 are referenced in this document. Where requirements in this standard differ from those of these referenced standards, the requirements of this standard shall apply.

105.2 Referenced Standards.

105.2.1 Power Operated Pedestrian Doors. ANSI/BHMA A156.10-1991.

105.2.2 Power Assist and Low Energy Power Operated Doors. ANSI/BHMA A156.19-1997.

105.2.3 Safety Code for Elevators and Escalators. ASME/ANSI A17.1-1996.

105.2.4 Audible Emergency Evacuation Signal. ANSI S3.41-1990.

105.2.5 Installation, Maintenance, and Use of Protective Signaling Systems. NFPA 72-1996.

106 Definitions

106.1 General. For the purpose of this standard, the terms listed in Section 106.5 have the indicated meaning.