

This is a preview of "ISO 16140-6:2019". [Click here to purchase the full version from the ANSI store.](#)

First edition
2019-11

Microbiology of the food chain — Method validation —

Part 6: Protocol for the validation of alternative (proprietary) methods for microbiological confirmation and typing procedures

Microbiologie de la chaîne alimentaire — Validation des méthodes —

*Partie 6: Protocole pour la validation de méthodes alternatives
(commerciales) pour la confirmation microbiologique et le typage*



Reference number
ISO 16140-6:2019(E)

© ISO 2019



COPYRIGHT PROTECTED DOCUMENT

© ISO 2019

All rights reserved. Unless otherwise specified, or required in the context of its implementation, no part of this publication may be reproduced or utilized otherwise in any form or by any means, electronic or mechanical, including photocopying, or posting on the internet or an intranet, without prior written permission. Permission can be requested from either ISO at the address below or ISO's member body in the country of the requester.

ISO copyright office
CP 401 • Ch. de Blandonnet 8
CH-1214 Vernier, Geneva
Phone: +41 22 749 01 11
Fax: +41 22 749 09 47
Email: copyright@iso.org
Website: www.iso.org

Published in Switzerland

This is a preview of "ISO 16140-6:2019". Click here to purchase the full version from the ANSI store.

Contents

	Page
Foreword	iv
Introduction	v
1 Scope	1
2 Normative references	1
3 Terms and definitions	2
4 General principles for the validation of confirmation and typing methods	3
5 Strains	4
6 Method comparison study	4
6.1 General	4
6.2 Selection of test strains	4
6.3 Inclusivity study	4
6.3.1 Testing of target strains	4
6.3.2 Family level (non- <i>Salmonella</i>)	5
6.3.3 Genus level (non- <i>Salmonella</i>)	5
6.3.4 Species level (non- <i>Salmonella</i>)	5
6.3.5 Microbial (sub)type level (non- <i>Salmonella</i>)	5
6.3.6 <i>Salmonella</i> genus or species level	5
6.3.7 <i>Salmonella</i> serovar level	6
6.4 Exclusivity study	6
6.4.1 Testing of non-target strains	6
6.4.2 Family level (non- <i>Salmonella</i>)	6
6.4.3 Genus level (non- <i>Salmonella</i>)	6
6.4.4 Species level (non- <i>Salmonella</i>)	6
6.4.5 Microbial (sub)type level (non- <i>Salmonella</i>)	6
6.4.6 <i>Salmonella</i> genus or species level	7
6.4.7 <i>Salmonella</i> serovar level	7
6.5 Expression and interpretation of results	7
6.6 Evaluation	9
7 Interlaboratory study	10
7.1 General	10
7.2 Data sets to be obtained	10
7.3 Protocol	11
7.4 Expression of results	12
7.5 Interpretation and evaluation	12
Annex A (normative) Points to be considered when selecting strains for testing inclusivity and exclusivity	14
Annex B (informative) Example of the validation of an alternative confirmation method to the species level (<i>Listeria monocytogenes</i>)	16
Annex C (informative) Example of the validation of an alternative typing method to the <i>Salmonella</i> serovar level (15 different serovars claimed)	19
Annex D (normative) Overview of the various options for validation under this document and the acceptability limits	23
Bibliography	25

Foreword

ISO (the International Organization for Standardization) is a worldwide federation of national standards bodies (ISO member bodies). The work of preparing International Standards is normally carried out through ISO technical committees. Each member body interested in a subject for which a technical committee has been established has the right to be represented on that committee. International organizations, governmental and non-governmental, in liaison with ISO, also take part in the work. ISO collaborates closely with the International Electrotechnical Commission (IEC) on all matters of electrotechnical standardization.

The procedures used to develop this document and those intended for its further maintenance are described in the ISO/IEC Directives, Part 1. In particular, the different approval criteria needed for the different types of ISO documents should be noted. This document was drafted in accordance with the editorial rules of the ISO/IEC Directives, Part 2 (see www.iso.org/directives).

Attention is drawn to the possibility that some of the elements of this document may be the subject of patent rights. ISO shall not be held responsible for identifying any or all such patent rights. Details of any patent rights identified during the development of the document will be in the Introduction and/or on the ISO list of patent declarations received (see www.iso.org/patents).

Any trade name used in this document is information given for the convenience of users and does not constitute an endorsement.

For an explanation of the voluntary nature of standards, the meaning of ISO specific terms and expressions related to conformity assessment, as well as information about ISO's adherence to the World Trade Organization (WTO) principles in the Technical Barriers to Trade (TBT) see www.iso.org/iso/foreword.html.

This document was prepared by Technical Committee ISO/TC 34, *Food products*, Subcommittee SC 9, *Microbiology*.

A list of all parts of the ISO 16140 series can be found on the ISO website.

Any feedback or questions on this document should be directed to the user's national standards body. A complete listing of these bodies can be found at www.iso.org/members.html.

This is a preview of "ISO 16140-6:2019". [Click here to purchase the full version from the ANSI store.](#)

Introduction

0.1 The ISO 16140 series

The ISO 16140 series has been expanded in response to the need for various ways to validate or verify test methods. It is the successor to ISO 16140:2003. The ISO 16140 series consists of six parts with the general title, *Microbiology of the food chain — Method validation*:

- *Part 1: Vocabulary;*
- *Part 2: Protocol for the validation of alternative (proprietary) methods against a reference method;*
- *Part 3: Protocol for the verification of validated reference methods and validated alternative methods in a single laboratory;*
- *Part 4: Protocol for method validation in a single laboratory;*
- *Part 5: Protocol for factorial interlaboratory validation for non-proprietary methods;*
- *Part 6: Protocol for the validation of alternative (proprietary) methods for microbiological confirmation and typing procedures.*

ISO 17468 is a closely linked International Standard, which establishes technical rules for the development and validation of standardized methods.

In general, two stages are needed before a method can be used in a laboratory.

- The first stage is the validation of the method. Validation is conducted using a study in a single laboratory followed by an interlaboratory study (see ISO 16140-2, ISO 16140-5 and as described in this document). In the case when a method is validated within one laboratory (see ISO 16140-4), no interlaboratory study is conducted.
- The second stage is method verification, where a laboratory demonstrates that it can satisfactorily perform a validated method. This is described in ISO 16140-3. Verification is only applicable to methods that have been validated using an interlaboratory study.

In general, two types of methods are distinguished: reference methods and alternative methods.

A reference method is defined in ISO 16140-1:2016, 2.59, as an “internationally recognized and widely accepted method”. The note to entry clarifies that “these are ISO standards and standards jointly published by ISO and CEN or other regional/national standards of equivalent standing”.

In the ISO 16140 series, reference methods include standardized reference (ISO and CEN) methods as defined in ISO 17468:2016, 3.5, as a “reference method described in a standard”.

An alternative method (method submitted for validation) is defined in ISO 16140-1:2016, 2.4, as a “method of analysis that detects or quantifies, for a given category of products, the same analyte as is detected or quantified using the corresponding reference method”. The note to entry clarifies that: “The method can be proprietary. The term ‘alternative’ is used to refer to the entire ‘test procedure and reaction system’. This term includes all ingredients, whether material or otherwise, required for implementing the method.”.

ISO 16140-4 addresses validation within a single laboratory. The results are therefore only valid for the laboratory that conducted the study. In this case, verification (as described in ISO 16140-3) is not applicable. ISO 16140-5 describes protocols for non-proprietary methods where a more rapid validation is required or when the method to be validated is highly specialized and the number of participating laboratories required by ISO 16140-2 cannot be reached. ISO 16140-4 and ISO 16140-5 can be used for validation against a reference method. ISO 16140-4 (qualitative and quantitative) and ISO 16140-5 (quantitative only) can also be used for validation without a reference method.

This is a preview of "ISO 16140-6:2019". Click here to purchase the full version from the ANSI store.

The flow chart in Figure 1 gives an overview of the links between the different parts mentioned above. It also guides the user in selecting the right part of the ISO 16140 series, taking into account the purpose of the study and the remarks given above.

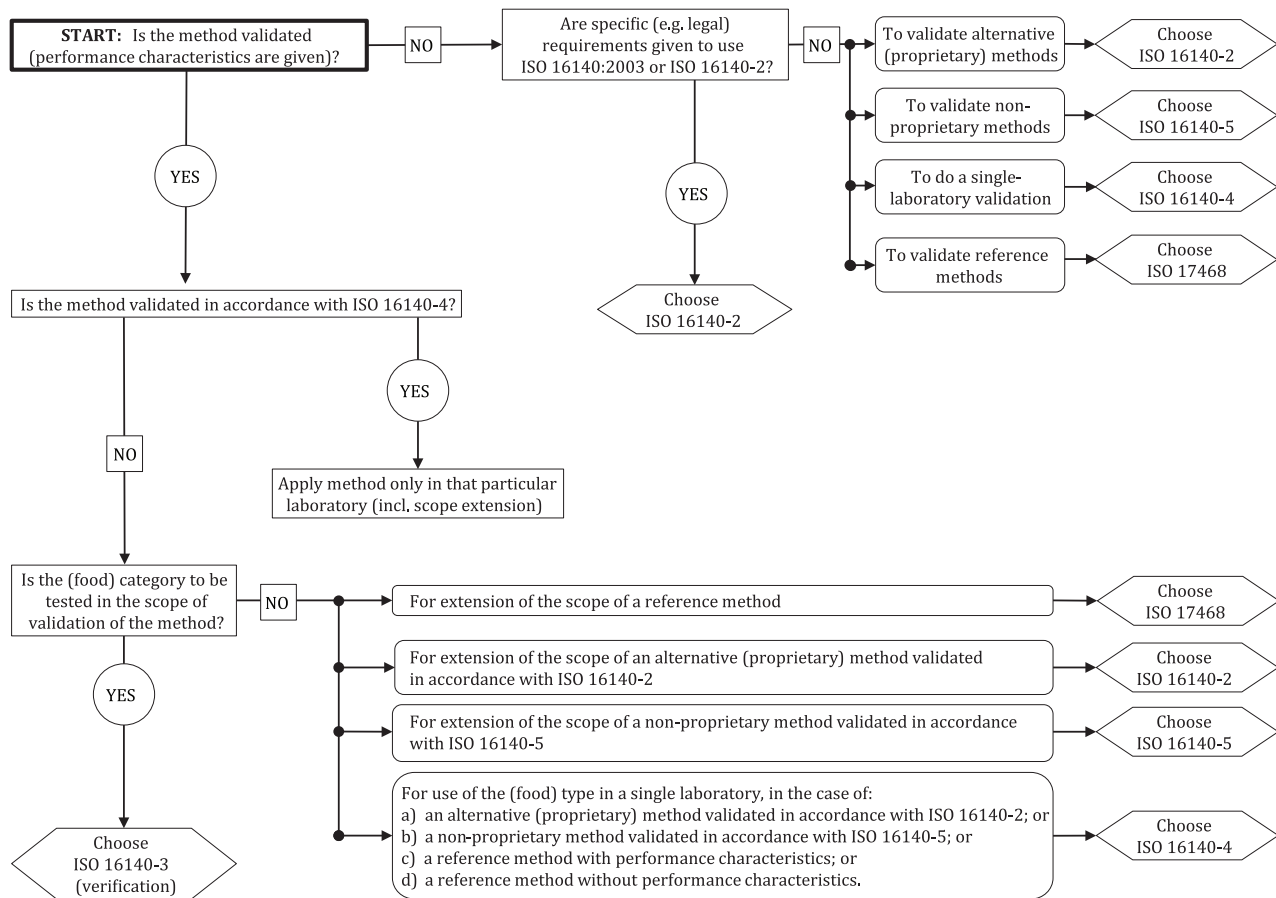


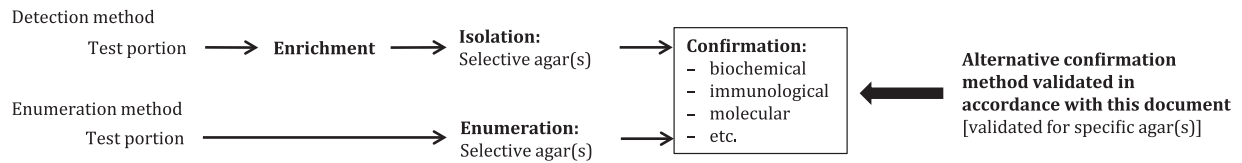
Figure 1 — Flow chart for application of the ISO 16140 series

NOTE In this document, the words “category”, “type” and/or “item” are sometimes combined with “(food)” to improve readability. However, the word “food” is interchangeable with “feed” and other areas of the food chain as mentioned in Clause 1.

This document, ISO 16140-6, is somewhat different from the other parts in the ISO 16140 series in that it relates to a very specific situation where only the confirmation procedure of a method is to be validated [e.g. the biochemical confirmation of *Enterobacteriaceae* (see ISO 21528-2)]. The confirmation procedure advances a suspected (presumptive) result to a confirmed positive result. The validation of alternative typing techniques (e.g. serotyping of *Salmonella*) is also covered by this document. The validation study in this document clearly defines the selective agar(s) from which strains can be confirmed using the alternative confirmation method. If successfully validated, the alternative confirmation method can only be used if strains are recovered on an agar that was used and shown to be acceptable within the validation study. Figure 2 shows the possibilities where an alternative confirmation method validated in accordance with this document can be applied (see text in the boxes).

This is a preview of "ISO 16140-6:2019". Click here to purchase the full version from the ANSI store.

Reference method



Alternative method validated in accordance with ISO 16140-2

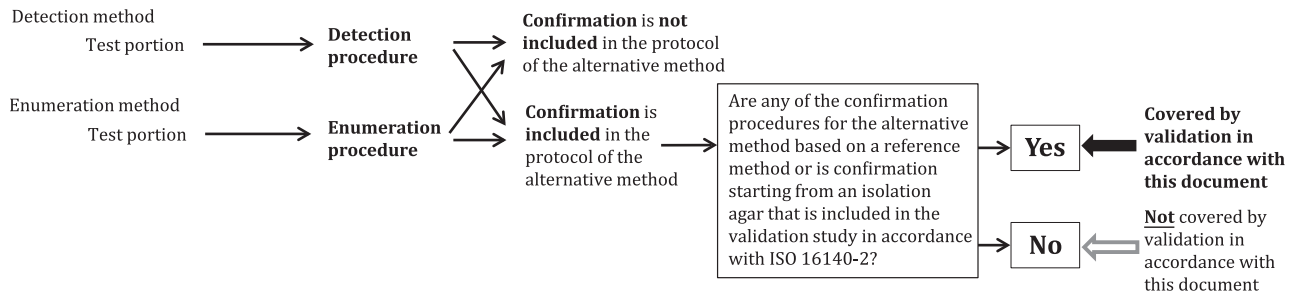


Figure 2 — Use of validated alternative confirmation methods (described in this document)

EXAMPLE An example application of a validated alternative confirmation method is as follows.

An alternative confirmation method based on ELISA has been validated to replace the biochemical confirmation for *Salmonella* as described in ISO 6579-1. In the validation study, XLD (mandatory agar in accordance with ISO 6579-1) plus BGA and a specified chromogenic agar (two optional agars for second plating in accordance with ISO 6579-1) were used as the agars to start the confirmation. The validated confirmation method can be used to replace the biochemical confirmation under the following conditions:

- by laboratories using the ISO 6579-1; or
- by laboratories using an ISO 16140-2 validated alternative method that refers to ISO 6579-1 for confirmation; or
- by laboratories using an ISO 16140-2 validated alternative method that starts the confirmation from XLD and/or BGA agar and/or the specified chromogenic agar.

The validated confirmation method cannot be used under the following conditions:

- by laboratories using an ISO 16140-2 validated alternative method that refers only to agars other than those included in the validation to start the confirmation (e.g. Hektoen agar and SS agar only); or
- by laboratories using an ISO 16140-2 validated alternative method that refers only to a confirmation procedure that does not require isolation on agar.

0.2 Validation and verification of methods for the microbiological confirmation and typing procedures

The procedure described in this document is intended for the “full” validation of alternative (proprietary) methods for microbiological confirmation and/or typing, hereafter referred to as “alternative confirmation methods”.

During the validation study, the performance of the alternative confirmation method is compared to the performance of the reference confirmation procedure.

The procedure for verification of alternative confirmation methods in a single laboratory is described in ISO 16140-3.