
This is a preview of ISO 5625:1978. [Click here to purchase the full version from the ANSI store.](#)

INTERNATIONAL STANDARD 5625

INTERNATIONAL ORGANIZATION FOR STANDARDIZATION • МЕЖДУНАРОДНАЯ ОРГАНИЗАЦИЯ ПО СТАНДАРТИЗАЦИИ • ORGANISATION INTERNATIONALE DE NORMALISATION

Shipbuilding — Welded bulkhead pieces with flanges for steel pipework — PN 6, PN 10 and PN 16

*Construction navale — Passages de cloison ou de ponts à brides réalisés par soudage pour tuyauteries en acier —
PN 6, PN 10 et PN 16*

First edition — 1978-07-01

UDC 629.12 : 621.643

Ref. No. ISO 5625-1978 (E)

Descriptors : shipbuilding, pipelines, pressure pipes, pipe fittings, connections for welding, bulkheads, dimensions.

FOREWORD

ISO (the International Organization for Standardization) is a worldwide federation of national standards institutes (ISO member bodies). The work of developing International Standards is carried out through ISO technical committees. Every member body interested in a subject for which a technical committee has been set up has the right to be represented on that committee. International organizations, governmental and non-governmental, in liaison with ISO, also take part in the work.

Draft International Standards adopted by the technical committees are circulated to the member bodies for approval before their acceptance as International Standards by the ISO Council.

International Standard ISO 5625 was developed by Technical Committee ISO/TC 8, *Shipbuilding*, and was circulated to the member bodies in April 1977.

It has been approved by the member bodies of the following countries :

Australia	France	Norway
Austria	Germany	Philippines
Belgium	India	Romania
Brazil	Italy	Spain
Bulgaria	Japan	Turkey
Chile	Korea, Dem. P. Rep. of	United Kingdom
Czechoslovakia	Korea, Rep. of	Yugoslavia
Finland	Netherlands	

The member bodies of the following countries expressed disapproval of the document on technical grounds :

Poland
U.S.S.R.

Shipbuilding — Welded bulkhead pieces with flanges for steel pipework — PN 6, PN 10 and PN 16

1 SCOPE

This International Standard specifies the main manufacturing dimensions of welded bulkhead pieces with flanges used in shipbuilding.

It also specifies the corresponding openings to be provided in bulkheads and decks.

2 FIELD OF APPLICATION

This International Standard concerns exclusively those pieces fabricated and attached by welding, to be used with flanges in accordance with ISO 2084 for pressure ratings PN 6, PN 10 or PN 16.

It does not specify the type of flange, the welding details, or the radii of butt-welding bends.

NOTE — Users of this International Standard should note that while observing the requirements of this International Standard they should at the same time ensure compliance with such statutory requirements, rules and regulations as may be applicable to the individual ship concerned.

3 REFERENCE

ISO 2084, *Pipeline flanges for general use — Metric series — Mating dimensions.*

4 TYPES

Figures 1 and 2 define standardized types :

- type A;
- type B.

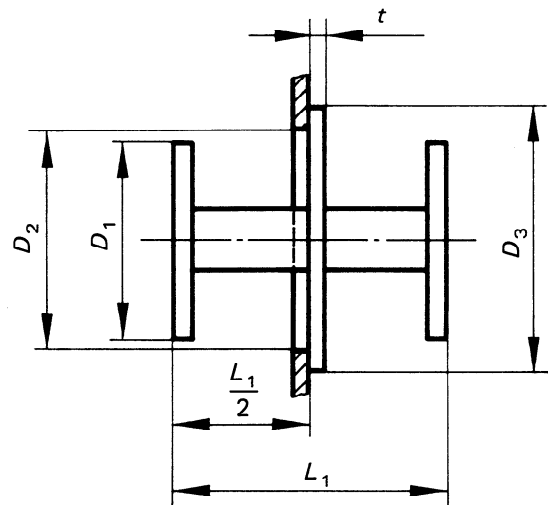
4.1 Type A

Type A is used where pipe connection is achieved using flanges on both sides of the bulkhead or deck (see figure 1).

4.2 Type B

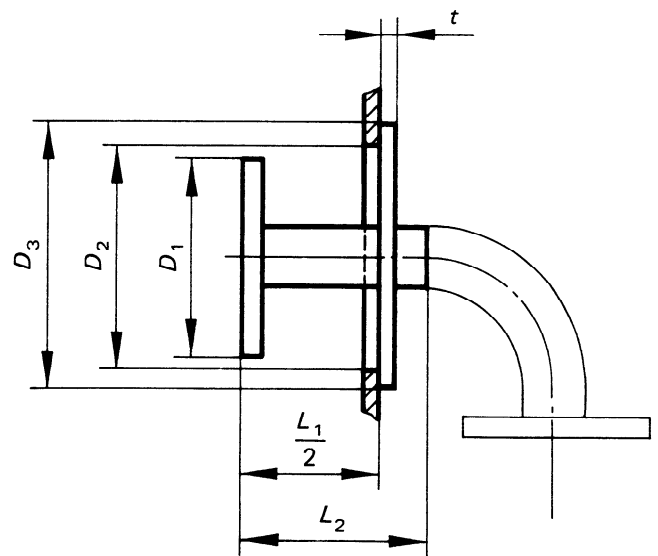
Type B is used where pipe connection is achieved using a flange on one side of the bulkhead or deck and a weld on the other side, whether a straight pipe or a butt-welding bend is used.

The type represented in figure 2 is assembled with a butt-welding bend for illustration purposes.



For dimension D_1 , see ISO 2084

FIGURE 1 — Type A



For dimension D_1 , see ISO 2084.

FIGURE 2 — Type B