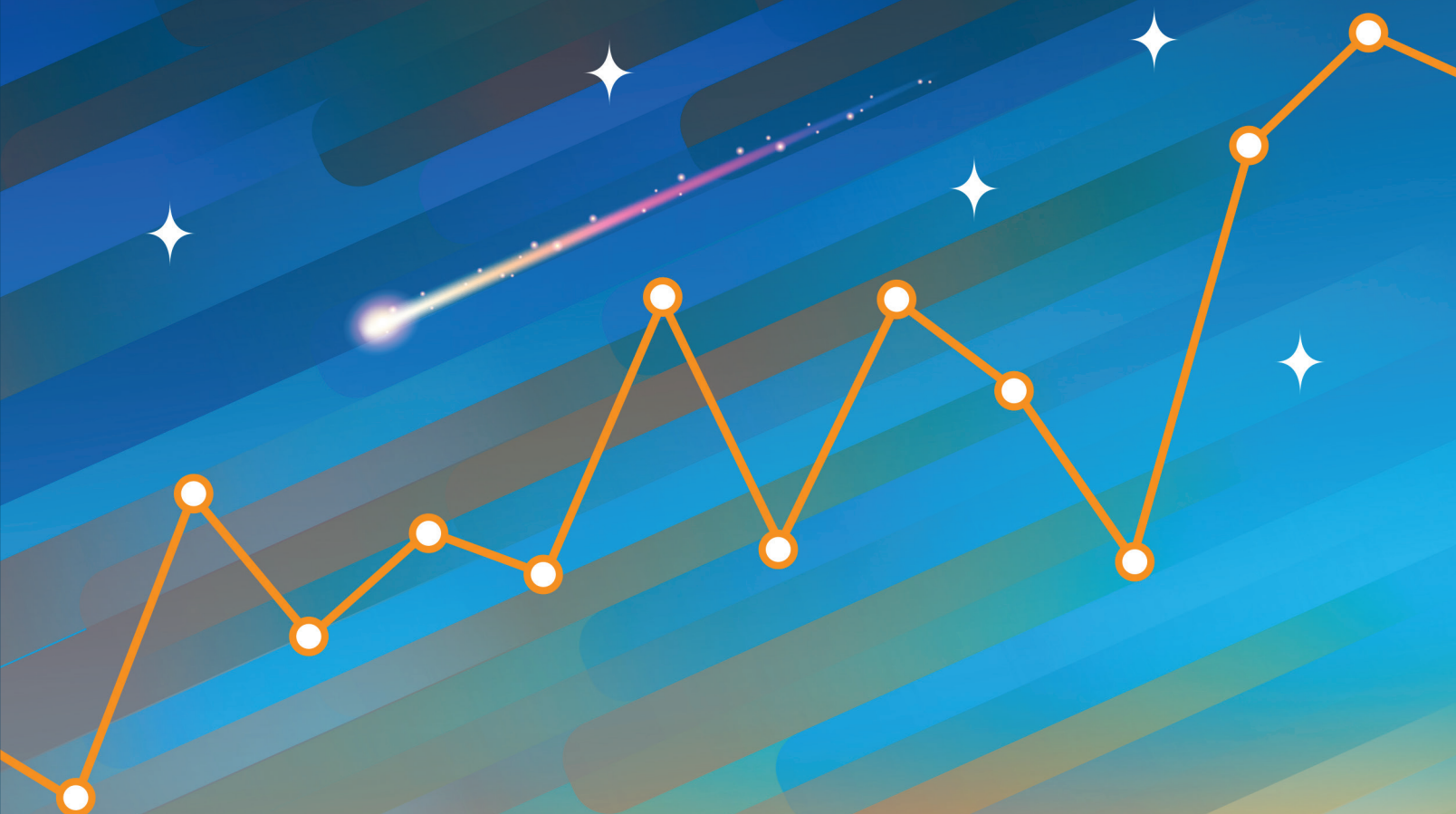


Practice Standard for SCHEDULING

Third Edition



PRACTICE STANDARD FOR SCHEDULING

Library of Congress Cataloging-in-Publication Data

Names: Project Management Institute.

Title: Practice standard for scheduling / Project Management Institute.

Description: Third edition. | Newtown Square : Project Management Institute, 2019. | Revised edition of Practice standard for scheduling, c2011. | Includes bibliographical references and index.

Identifiers: LCCN 2019009443 (print) | LCCN 2019010321 (ebook) | ISBN 9781628255621 (ePub) | ISBN 9781628255638 (kindle) | ISBN 9781628255645 (Web PDF) | ISBN 9781628255614 (paperback)

Subjects: LCSH: Project management--Standards. | BISAC: BUSINESS & ECONOMICS / Project Management.

Classification: LCC HD69.P75 (ebook) | LCC HD69.P75 P653 2019 (print) | DDC 658.4/04--dc23

LC record available at <https://lcn.loc.gov/2019009443>

ISBN: 978-1-62825-561-4

Published by:

Project Management Institute, Inc.
14 Campus Boulevard
Newtown Square, Pennsylvania 19073-3299 USA
Phone: +610-356-4600
Fax: +610-356-4647
Email: customercare@pmi.org
Internet: www.PMI.org

©2019 Project Management Institute, Inc. All rights reserved.

Our copyright content is protected by U.S. intellectual property law that is recognized by most countries. To republish or reproduce our content, you must obtain our permission. Please go to <http://www.pmi.org/permissions> for details.

To place a Trade Order or for pricing information, please contact Independent Publishers Group:

Independent Publishers Group
Order Department
814 North Franklin Street
Chicago, IL 60610 USA
Phone: +1 800-888-4741
Fax: +1 312-337-5985
Email: orders@ipgbook.com (For orders only)

For all other inquiries, please contact the PMI Book Service Center.

PMI Book Service Center
P.O. Box 932683, Atlanta, GA 31193-2683 USA
Phone: 1-866-276-4764 (within the U.S. or Canada) or +1-770-280-4129 (globally)
Fax: +1-770-280-4113
Email: info@bookorders.pmi.org

Printed in the United States of America. No part of this work may be reproduced or transmitted in any form or by any means, electronic, manual, photocopying, recording, or by any information storage and retrieval system, without prior written permission of the publisher.

The paper used in this book complies with the Permanent Paper Standard issued by the National Information Standards Organization (Z39.48—1984).

PMI, the PMI logo, PMBOK, OPM3, PMP, CAPM, PgMP, PfMP, PMI-RMP, PMI-SP, PMI-ACP, PMI-PBA, PROJECT MANAGEMENT JOURNAL, PM NETWORK, PMI TODAY, PULSE OF THE PROFESSION and the slogan MAKING PROJECT MANAGEMENT INDISPENSABLE FOR BUSINESS RESULTS. are all marks of Project Management Institute, Inc. For a comprehensive list of PMI trademarks, contact the PMI Legal Department. All other trademarks, service marks, trade names, trade dress, product names and logos appearing herein are the property of their respective owners. Any rights not expressly granted herein are reserved.

NOTICE

The Project Management Institute, Inc. (PMI) standards and guideline publications, of which the document contained herein is one, are developed through a voluntary consensus standards development process. This process brings together volunteers and/or seeks out the views of persons who have an interest in the topic covered by this publication. While PMI administers the process and establishes rules to promote fairness in the development of consensus, it does not write the document and it does not independently test, evaluate, or verify the accuracy or completeness of any information or the soundness of any judgments contained in its standards and guideline publications.

PMI disclaims liability for any personal injury, property or other damages of any nature whatsoever, whether special, indirect, consequential or compensatory, directly or indirectly resulting from the publication, use of application, or reliance on this document. PMI disclaims and makes no guaranty or warranty, expressed or implied, as to the accuracy or completeness of any information published herein, and disclaims and makes no warranty that the information in this document will fulfill any of your particular purposes or needs. PMI does not undertake to guarantee the performance of any individual manufacturer or seller's products or services by virtue of this standard or guide.

In publishing and making this document available, PMI is not undertaking to render professional or other services for or on behalf of any person or entity, nor is PMI undertaking to perform any duty owed by any person or entity to someone else. Anyone using this document should rely on his or her own independent judgment or, as appropriate, seek the advice of a competent professional in determining the exercise of reasonable care in any given circumstances. Information and other standards on the topic covered by this publication may be available from other sources, which the user may wish to consult for additional views or information not covered by this publication.

PMI has no power, nor does it undertake to police or enforce compliance with the contents of this document. PMI does not certify, test, or inspect products, designs, or installations for safety or health purposes. Any certification or other statement of compliance with any health or safety-related information in this document shall not be attributable to PMI and is solely the responsibility of the certifier or maker of the statement.

TABLE OF CONTENTS

1. INTRODUCTION	1
1.1 Project Scheduling	2
1.2 Why Scheduling?	3
1.3 Overview	5
1.4 Purpose	7
1.5 Applicability	7
2. SCHEDULE MODEL PRINCIPLES AND CONCEPTS.....	9
2.1 Overview	9
2.2 Project Life Cycles and Scheduling Approaches.....	10
2.2.1 Critical Path Approach	14
2.2.2 Critical Chain.....	18
2.2.3 Adaptive Life Cycle.....	21
2.2.4 Rolling Wave Planning	23
2.2.5 Other Approaches and Emerging Trends.....	25
2.3 Scheduling Tool	28
2.4 Schedule Model	29
2.5 Schedule Model Instances and Presentations	30
2.6 Agile	31
2.6.1 Tracking and Presentation.....	38

3. SCHEDULE MODEL GOOD PRACTICES OVERVIEW.....	45
3.1 Schedule Management.....	45
3.1.1 Schedule Data Management Plan.....	46
3.1.2 Schedule Management Plan	47
3.1.2.1 Scheduling Approach.....	48
3.1.2.2 Scheduling Tool.....	48
3.1.2.3 Schedule Model Creation Plan.....	48
3.1.2.4 Schedule Model ID	49
3.1.2.5 Schedule Model Instance.....	49
3.1.2.6 Calendars and Work Periods	49
3.1.2.7 Project Update Cycle and Activity Granularity	50
3.1.2.8 Milestone and Activity Coding Structure	51
3.1.2.9 Resource Planning	52
3.1.2.10 Key Performance Indicators	52
3.1.2.11 Master Schedule Model	53
3.1.2.12 Change Control.....	53
3.2 Schedule Model Creation	53
3.2.1 Develop Schedule Model Baseline.....	55
3.2.1.1 Define Milestones	55
3.2.1.2 Define the Project's Activities	55
3.2.1.3 Sequence Activities.....	59
3.2.1.4 Determine Resources for Each Activity.....	61
3.2.1.5 Determine the Duration for Each Activity	62
3.2.1.6 Analyze the Schedule Output.....	62
3.2.1.7 Approve the Schedule Model.....	64
3.2.1.8 Baseline the Schedule Model	65
3.2.1.9 Schedule Levels	65
3.3 Schedule Model Maintenance.....	67
3.3.1 Collect Actuals and Remaining Work or Duration	67
3.3.2 Update the Schedule Model According to the Actuals	68

3.3.3 Compare and Address Any Deviation	68
3.3.4 Update the Schedule Model with Approved Changes.....	69
3.3.5 Update the Baseline Schedule Model	69
3.3.6 Communicate	69
3.3.7 Maintain the Records	70
3.3.8 Change Control.....	70
3.4 Schedule Model Analysis	71
3.4.1 Critical Path and Critical Activities.....	71
3.4.1.1 Critical Path.....	71
3.4.1.2 Critical Activities.....	72
3.4.2 Total Float and Free Float.....	72
3.4.3 Estimation of Activity Durations	74
3.4.4 Date Constraints.....	76
3.4.5 Open-Ended Activities.....	77
3.4.6 Out of Sequence (OOS) Logic	79
3.4.7 Leads and Lags	81
3.4.8 Start-to-Finish Relationship	82
3.4.9 Links to/from Summary Activities.....	83
3.4.10 Schedule Resource Analysis.....	83
3.4.11 Schedule Risk Assessment.....	83
3.4.12 Earned Schedule	85
3.5 Communication and Reporting	88
4. SCHEDULING COMPONENTS.....	93
4.1 How to Use the Components List	94
4.1.1 Component Name	94
4.1.2 Required, Conditional, or Optional Use.....	94
4.1.3 Manual or Calculated	94
4.1.4 Data Format.....	95
4.1.5 Behavior.....	95
4.1.6 Good Practices	95

4.1.7 Conditional Note/Associated Component.....	95
4.1.8 Definition	95
4.2 List of Components by Category	96
4.3 Detailed Components List	98
5. CONFORMANCE INDEX.....	137
5.1 Conformance Overview	137
5.1.1 Categories of Components.....	138
5.1.2 Use of Schedule Components	138
5.1.3 Conformance Assessment	139
5.2 Conformance Assessment Process	140
APPENDIX X1	
THIRD EDITION CHANGES	143
APPENDIX X2	
CONTRIBUTORS AND REVIEWERS OF THE <i>PRACTICE STANDARD FOR SCHEDULING</i> – THIRD EDITION	145
X2.1 <i>Practice Standard for Scheduling</i> – Third Edition Core Committee	145
X2.2 Reviewers	146
X2.2.1 SME Review.....	146
X2.2.2 Final Exposure Draft Review	146
X2.3 PMI Standards Program Member Advisory Group (MAG).....	148
X2.4 Consensus Body Review	148
X2.5 Production Staff	149
APPENDIX X3	
CONFORMANCE ASSESSMENT SCORING TABLE	151
APPENDIX X4	
CONFORMANCE ASSESSMENT WORKSHEETS.....	159

APPENDIX X5	
FORENSIC SCHEDULE ANALYSIS.....	165
REFERENCES	169
GLOSSARY	171
INDEX	195

LIST OF TABLES AND FIGURES

Figure 1-1. Schedule Model Development and Use.....	6
Figure 2-1. Life Cycle Continuum.....	10
Figure 2-2. Example of Predictive Flow Diagram.....	11
Figure 2-3. Iterative Flow Diagram.....	11
Figure 2-4. A Life Cycle of Varying Size Increments.....	11
Figure 2-5. Adaptive Flow Diagram.....	12
Figure 2-6. Combined Predictive and Adaptive Approaches Used.....	13
Figure 2-7. Schedule Model Flow.....	15
Figure 2-8. Flow Diagram for the Schedule Model Mapped to <i>PMBOK® Guide</i> Knowledge Area Processes.....	16
Figure 2-9. Example of CPM Diagram.....	18
Figure 2-10. Feeding Buffers.....	20
Figure 2-11. Project Buffers.....	21
Figure 2-12. Diagram of Uncertainty.....	22
Figure 2-13. Examples of Agile Approaches.....	23
Figure 2-14. Example of Rolling Wave Planning—Planning Package 1 Decomposed.....	24
Figure 2-15. Example of Rolling Wave Planning—Planning Package 2 Decomposed.....	24
Figure 2-16. Location-Based Schedule Example.....	25

Figure 2-17. Schedule Model Instances and Presentations	30
Figure 2-18. Example of Multiple Iterations or Sprints	32
Figure 2-19. Typical Adaptive Life Cycle.....	33
Figure 2-20. Results of Sprint (Iteration) Planning Meeting	34
Figure 2-21. Scrum Board Displaying Sprint (Iteration) 1.....	35
Figure 2-22. Kanban Board	36
Figure 2-23. Example of Functional Dependencies between Requirements.....	37
Figure 2-24. Typical Burndown Chart with Planned Work	38
Figure 2-25. Burndown Chart with Remaining Work	39
Figure 2-26. Burndown Chart with Progress Smoothed-Over Iteration	40
Figure 2-27. Burndown Chart—Commitment Not Met.....	40
Figure 2-28. Burndown Chart with Remaining Work	41
Figure 2-29. Burndown Chart with Commitments Met	41
Figure 2-30. Example of a Burnup Chart	42
Figure 2-31. Relationships between Product Vision, Release Planning, and Iteration Planning	43
Figure 3-1. Summary Activities.....	57
Figure 3-2. LOE Activity	58
Figure 3-3. Hammock Activity.....	58
Figure 3-4. Illustrations of Relationship Types in CPM Methodology.....	60
Figure 3-5. Required Activity Relationships	61
Figure 3-6. Total Float and Free Float	73
Figure 3-7. Example of Precedence Diagram with PERT Activity Duration Estimates	75

Figure 3-8. Example of Standard Deviation of an Activity	76
Figure 3-9. Example of Open Ends by Omission.....	78
Figure 3-10. Virtual Open Example	79
Figure 3-11. Out of Sequence Logic Example.....	80
Figure 3-12. Progress Override vs. Retained Logic	81
Figure 3-13. Leads vs. Lags.....	82
Figure 3-14. Resource Leveling.....	84
Figure 3-15. Example Duration Probability Distribution for a Single Activity	85
Figure 3-16. Relationship between ES, PV, and EV	86
Figure 3-17. Earned Schedule Reporting	87
Figure 3-18. Sample Project Schedule Presentations.....	91
Figure X4-1. Base Worksheet.....	160
Figure X4-2. Resource-Required Example Worksheet	161
Figure X4-3. Resource-, EVM-, and Risk-Required Example Worksheet.....	162
Figure X4-4. Resource- and Risk-Required Example Worksheet	163
Figure X4-5. Non-Scored Example Worksheet	164
Table 3-1. Earned Schedule Formulas	88
Table 3-2. Levels of Schedule Model Instance Presentations	90
Table 4-1. List of Components by Category	97
Table 5-1. Number of Components by Category.....	140
Table X3-1. Sample Conformance Assessment Scoring Table	152

1

INTRODUCTION

The *Practice Standard for Scheduling* provides the framework to create, manage, and maintain schedules in a project environment. This practice standard contains five main sections. Each section provides additional information on the content and terminology used in this practice standard:

Section 1—Introduction. This section provides an introduction to scheduling and its benefits, as well as an overview of the development and use of schedule models.

Section 2—Schedule Model Principles and Concepts. This section provides guidance and information on the principles and concepts associated with schedule model creation and use within predictive, adaptive, or hybrid environments.

Section 3—Schedule Model Good Practices Overview. This section provides guidance and information on generally accepted good practices associated with the planning, developing, maintaining, communicating, and reporting processes of an effective critical path method (CPM) schedule model approach.

Section 4—Scheduling Components. This section provides a detailed catalog of the potential components of a CPM scheduling tool.

Section 5—Conformance Index. This section provides an overview of the conformance index process. It provides a method for assessing how well a CPM schedule model incorporates the components, guidelines, definitions, behaviors, and good practices outlined in this practice standard.

Appendices contained in this practice standard are:

Appendix X1—Third Edition Changes

Appendix X2—Contributors and Reviewers of the *Practice Standard for Scheduling* – Third Edition

Appendix X3—Conformance Assessment Scoring Table

Appendix X4—Conformance Assessment Worksheets

Appendix X5—Forensic Schedule Analysis